



Heathcote Primary School

Newsletter

Telephone: (03) 5433 3090

heathcote.ps@education.vic.gov.au

Issue No. 13

15th May 2026

At Heathcote PS we value... Respect Learning Teamwork Responsibility

We acknowledge that we are on the traditional lands of the Taungurung people and we pay our respects to their Elders, past, present and emerging.

What's Happening in Term 2?

Weeks 2-8	Thursdays	Bendigo Community Health Friends Program (weekly) (3/4N & 3/4HP)
Week 5	Wednesday 20th May	Foundation 2027 School Tour @ 4pm Foundation Information Evening @ 4:30pm
	Friday 22nd May	District Cross Country (details sent home 15/5/26)
Week 6	Thursday 28th May	Library visits (Foundation, 1/2JS, 1/2M)
Week 7	Wednesday 3rd June	Health & Wellbeing Local Parent Program—Managing Big Feelings in Children (2pm, Stephanie Alexander Kitchen)
	Thursday 4th June	Library visits (3/4HP, 3/4N, 5/6F, 5/6MG)
Week 8	Monday 8th June	King's Birthday—public holiday—no school
	Tuesday 9th June	Curriculum Day—no school for students
Week 9	Tuesday 16th June	School Photos
	Wednesday 17th June	School Council @ 5:30pm
	Thursday 18th June	Junior Unit Fun Night (details sent home 15/5/26)
Week 10	Friday 26th June	End of Term 2 (early dismissal @ 2pm)

2026 - What's Due?

Friday 12th June	Barerooted tree order form
Friday 31st July	2027 Foundation enrolment forms

What's Happening in 2026?

Term 3 Week 1	Monday 13th July	Learning Conversation Day (alternate timetable, details to come)
Week 3	Wednesday 29th July	Division netball (interested senior students)
Week 5	Wednesday 12th August	Real Schools Parent Information Session (after school)
Week 10	Friday 18th September	End of Term 3 (early dismissal @ 2pm)
Term 4 Week 1	Monday 5th October	Start of Term 4
Week 3	Friday 23rd October	Division Cricket (interested Gr 5/6 students)
Week 4	Mon 26th—Fri 30th Oct.	Swimming lessons—Foundation, 1/2JS & 1/2M
Week 7	Tues. 17th—Thurs. 19th Nov	Energy Breakthrough Camp (pushcarts)
Week 8	Mon. 23rd—Wed. 25th Nov.	Grade 5/6 Camp
Week 10	Thursday 10th December	Grade 6 Graduation
Week 11	Friday 18th December	End of Term 4 (early dismissal @ 1:30pm)

Whole School Assembly

Fridays, 9:05am—9:25am, astroturf area

Please join us to celebrate achievements and milestones from the 'week that was'
In the event of inclement weather, assembly will be online (meeting link will be sent)

Please note that more dates will be added to the above list throughout the year



Heathcote Primary School
Respect ~ Learning ~ Teamwork ~ Responsibility

VALUES AWARDS

SWPBS FOCUS: We are inclusive.

	Student	Reason
F	Toby	For consistently including others and being a positive role model in the classroom. Toby consistently makes everyone feel included in our classroom and helps others when they need help. Well done, Toby.
1/2JS	Hazel	For consistently including others and being a positive role model in the classroom. Well done, Hazel!
1/2M	Archer	For always including others and showing outstanding friendship and teamwork. Well done, Archer!
3/4HP	Jett J	For showing inclusiveness, working well with others and being a positive role model in the classroom. Congratulations, Jett!
3/4N	Nathan	For being inclusive of everyone in our community across all areas of the school. Nathan always makes everyone feel included and helps others where needed! Well done, Nathan!
5/6F	Kaylee	For being an inclusive member of our class. Your friendly nature and willingness to include others makes for a positive and supportive class environment.
5/6MG	Griffin	For being an inclusive member of 5/6MG. Your kind and caring nature ensures that everyone feels welcome and included. Well done, Griffin.

KINDNESS AWARDS

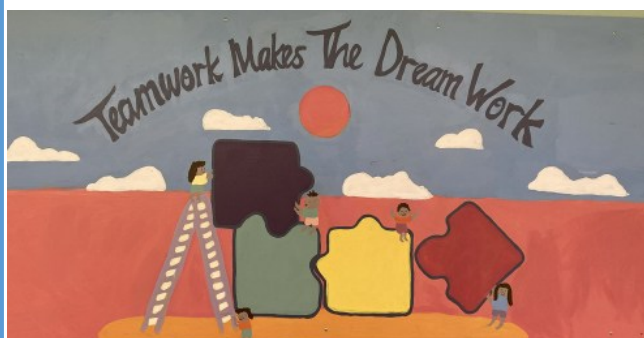
Students who consistently demonstrate acts of kindness, compassion and empathy towards others, promoting a positive and inclusive school environment.

	Student	Reason
Junior Unit	Saskia	You are our Junior Unit Kindness Ambassador for consistently showing kindness to everyone, for always considering the feelings of others, and for being a wonderful friend and a great role model proudly representing HPS. Well done!
Middle Unit	Ace	Ace consistently is a kind and supportive friend. Ace is always on the lookout to make sure everyone around him is ok and takes the time to help those who need it. Thank you for being a great friend to all, Ace!
Senior Unit	Xander	For showing kindness by caring for your friends and checking in on those around you. Well done, Xander!

Congratulations to our award winners!

These awards were presented at our assembly on Friday 14th May

Congratulations to this week's award recipients!



READING AWARDS



Foundation	1/2JS	1/2M	3/4HP	3/4N	5/6MG	5/6F
<u>50 Nights</u>	<u>50 Nights</u>	<u>50 Nights</u>	<u>50 Nights</u>	<u>50 Nights</u>	<u>50 Nights</u>	<u>50 Nights</u>
Austin	Ben	Emma	Pippa	Jaydy	Angelo	Jess
Charlie	Heidi	Audrey	Jaimee	Timoci	Freddie	Jax
Ewan	Caspar	Fatat	Cooper	Jayden	Hailee	
Oliver	Georgia	Tayte	Alex	Matilda	Jackson	
Willow	Salwa		Yahya		Lexie	
Zayne	Luna				Liam	
Sienna	Xavier					
Emily	Amelia		<u>100 Nights</u>	<u>100 Nights</u>	<u>100 Nights</u>	
Lusianna	Evie		Jaimee	Jaydy	Angelo	
Oscar	Zoe				Hailee	
Jaxon	Jack				Freddie	
Dahlia	Ernie					
Iris	George					
Saskia						



*The more that you read, the more things you will know.
The more that you learn, the more places you'll go.*

Dr Seuss



Griffin
Savannah
Charlotte H



*Students have the option of wearing casual clothes to school on their birthday
(or the closest school day to their birthday if their birthday falls on the weekend
or in the school holidays)*

Welcome to Heathcote PS!

*Introducing the newest members of the Heathcote PS community,
with thanks to Ms John for organising their enrolment.*



Principal's Report



Heathcote Primary School
Respect ~ Learning ~ Teamwork ~ Responsibility

Each week we focus on an expected behaviour from our [Schoolwide Positive Behaviour Support \(SWPBS\)](#) matrix. This matrix was created in 2025 with input from students, staff and families. There is a copy on page 15. During the week, the expected behaviour is explicitly taught—in the same way we teach literacy and numeracy, we also teach expected behaviours. This past week, our focus has been **'we are inclusive'**. There have been many examples of inclusivity across the school, including listening when someone is speaking, including other people's ideas, inviting someone to join a game, taking turns and sharing equipment. Our students are often complimented, including by visitors, for the way they wait their turn, greet people and include others.

A highlight of my time on yard duty in the past week was to see so many examples of inclusivity and teamwork—everything from a group of students ranging in age from Grade 1 to Grade 6 playing 'Teddy Bear' skipping, encouraging each other, taking turns and including everyone to a group of keen netballers organising their own game, making sure no one was left out. A true credit to our students is that they not only include their peers in their games but also invite adult to join them too. I must have looked a little lonely as I was invited to have a turn skipping and join the netball warm up. Note to self: increase own fitness levels!

Last week, the Junior Unit delivered little green caddies, lined with a compostable bag, to classrooms to collect food scraps. This is part of their inquiry into sustainability. Each day, the food scraps will be emptied into the giant green bin. There will be a separate food collection for the chickens to ensure they only eat chicken friendly food scraps. The 1/2s dropped off the first food bag on Friday and we are looking forward to incorporating this new routine into daily life at Heathcote PS.

Like all schools, we continually reflect upon our practice in order to identify (and celebrate) strengths and areas to further strengthen. We use different information, evidence and data during this process to determine and monitor our goals. Learning data tells us that reading is our strength and identifies maths as the next area to focus on. As part of our maths focus, we will be including a 'Maths Problem of the Week' (page 8) in the newsletter to promote discussion and problem solving. Maths is everywhere—from cooking to shopping, building to telling the time and solving every day problems. We know that sometimes people don't consider themselves a "maths person" and we are keen to challenge this mindset, building a whole school enthusiasm for all things mathematics.



Maths Problem of the Week

Put your thinking caps on everyone! It's time to solve some maths problems. In honour of the arrival of our new feathered friends, this week's problems have a chicken theme. **Each problem below has more than one answer.** How many examples can your family find? Be creative!



Foundation

The chickens laid some eggs. They laid less than 10 eggs but more than two eggs.

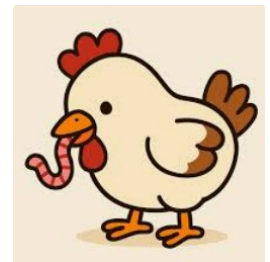
How many eggs might they have laid?



Grade 1/2

The chickens ate an odd number of worms. They ate more than 15 worms and less than 39 worms.

How many worms might they have eaten?



Grade 3/4

Half the chickens dug up weeds in the garden. How many chickens in total might there have been and how many were gardening?



Grade 5/6

A chicken coop has a perimeter of 26 metres. What might it look like?



Why did the chicken cross the playground?

To get to the other slide!

Maths Is Everywhere!

THE EDUCATION STATE VICTORIA State Government Education and Training



Maths Every Day



Monday

Make collections.

- Collect objects from the outdoors, like stones, leaves or twigs.
- Sort them into groups and count how many items are in each group.

How many items are there in your favourite collection?



Tuesday

Try measuring objects.

- Explore ways of measuring using sticks, foot prints or hand lengths.
- Measure the height of people in your family.

Who is the tallest? Who is the shortest?



Wednesday

Work out ways to measure ingredients for a recipe.

- Explore ways of measuring using a cup, a jug, a teaspoon and a tablespoon.
- If you have kitchen scales weigh different foods such as a box of flour, a bag of rice or some vegetables.

Put the things you have weighed in order from lightest to heaviest.

Maths Is Everywhere!

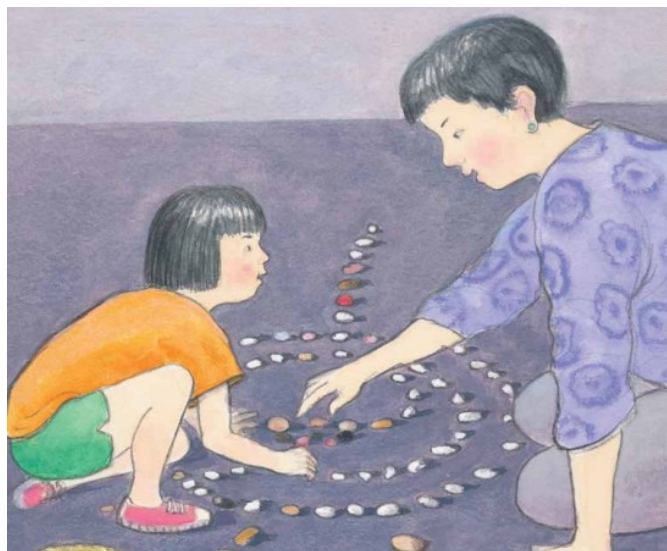


Thursday

Think of ways of moving with maths outdoors.

- Find ways to balance your weight with a friend on the seesaw
- How many jumps does it take to get from the park bench to the see-saw?

What other maths games can you play in the playground?

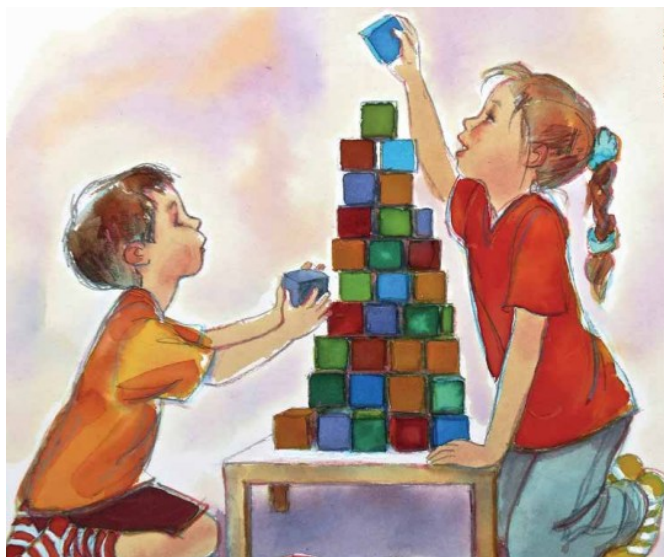


Friday

Find patterns.

- Try following a pattern someone else has started and continue the pattern on your own.
- Make a pattern using pebbles, pegs or pieces of coloured paper.

What patterns can you see around you?



Saturday

Stack building blocks.

- Build a tower as high as you can.
- Can you build a tower that is taller than you are?

What other structures can you make with building blocks?



Sunday

Seek out shapes.

- Start and finish a jigsaw puzzle.
- When you wipe down the table after a meal, talk about which side of the table is longer, shorter, what's its shape?

Can you draw some of the shapes you can see inside your house?

3/4 Cooking Class



5/6 Cooking Class



School Community Kilometre Club



Every Friday from 8:30am, our Kilometre Club will be up and running—rain, hail or shine!

Students can join Kerry, Miss H and others are welcome to complete laps around the bike track, building fitness and having fun along the way. Each lap will be counted towards our whole-school total. Our Term 2 goal is to reach 100 laps—let's see how far we can go together! 🏃♀️ 🏃♂️



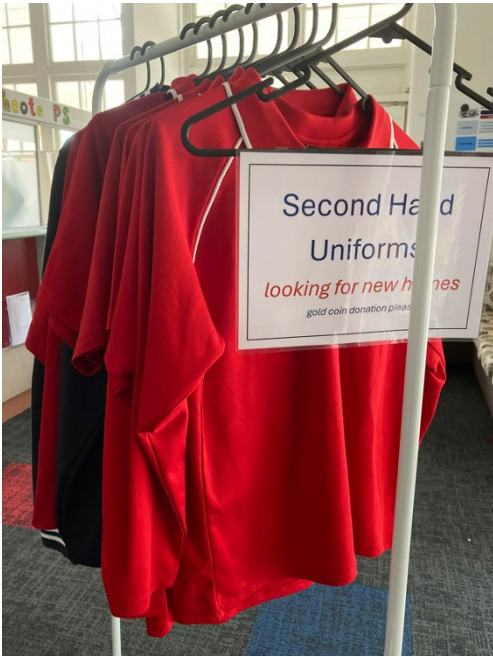
Walk, run, jog, crawl all abilities welcome



Heathcote Primary School
Respect ~ Learning ~ Teamwork ~ Responsibility

Term 2 Total at Week 4: 111 laps!

Uniform News



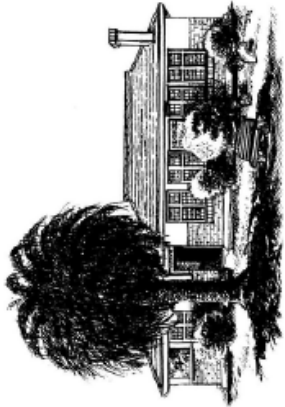
An assortment of second hand:

- T-shirts (short and long sleeved)
- Shorts
- Tracksuit pants
- Jumpers
- Dresses

are available at the office for a gold coin donation



Beanies are available from the school office



HEATHCOTE PRIMARY SCHOOL

RESPECT • LEARNING • TEAMWORK • RESPONSIBILITY

LEARNING

ALWAYS

We use an appropriate voice

We use manners and kind words

We follow instructions

We keep our hands and feet to ourselves

INSIDE

We follow classroom expectations

We walk

We leave nature in nature

We share our spaces

OUTSIDE

RESPECT

TEAMWORK

We are inclusive

We share

We wait our turn

We pack up

We choose teams fairly

We determine and play by the rules

RESPONSIBILITY

We use equipment for its intended purpose

We arrive on time

We look after school property

We place rubbish in the correct bin

We use our 'calm down' strategies

We use materials for their intended purpose

We participate

We return our sports equipment

Community Reminders



Heathcote Primary School
Respect ~ Learning ~ Teamwork ~ Responsibility

Annual Privacy Reminder for our School Community

Our school collects and uses student and parent personal information for standard school functions or where permitted by law, as stated in the [Schools' privacy policy](#) and the [Schools' privacy collection notice](#).

Our [Photographing, Filming and Recording Students policy](#) describes how we collect and use photographs, video and recordings of students. The policy also explains when parent consent is required and how it can be provided and withdrawn.

We ask parents to also review the guidance we provide on how we use [[Microsoft 365/Google Workspace for Education](#)] safely at the school and what parents can do to further protect their child's information. If after reviewing the guidance, you have any questions or concerns regarding your child using [Microsoft 365/Google Workspace for Education], please contact the school.

For more information about privacy, refer to: [Schools' privacy policy: information for parents](#). This information is also available in eleven community languages:

Amharic
Arabic
Chinese
Dari
Gujarati
Mandarin
Somali
Sudanese
Turkish
Urdu
Vietnamese

Late Arrivals & Early Departures

If students arrive after 9am or need to leave before 3pm, they need to sign in or sign out at the office. This is done using the Compass portal. 5/6MG visited the office to practise the process.



Mobile Phone Policy (student use)

Department policy requires that students who choose to bring mobile phones to school must have them switched off and securely stored during school hours, including break times.

All schools are required to have a local school policy on mobile phones that reflects this requirement and which provides details for the implementation of the policy at their school.

Our school's mobile phone policy (student use) is available on the school website [HERE](#).

In a nutshell, mobile phones and smart watches with mobile phone capabilities are to be:

- switched off during school hours
- dropped off at the office for secure storage upon arrival. Eg. Not kept in school bags.
- collected at the end of the school day.



Community Reminders



Heathcote Primary School
Respect ~ Learning ~ Teamwork ~ Responsibility

Yard Supervision

The school yard is supervised from 8:45am until 9am. There is an announcement at 8:45am to signal classroom doors are open. Students are able to put their bags in their room, complete any before school routines and monitor jobs before heading back outside to play. The hospital end of the oval and playground are out of bounds before school.

After school, staff are on bus and crossing duty (which includes carpark duty in the main carpark). The main yard is not supervised. Any students who have not been collected by 3:15pm are taken to the office.

After school care is available through Trinity Academy. A bus from Heathcote PS drops after school care passengers at Trinity. For bookings, please contact Trinity Academy on [\(03\) 4411 6803](tel:0344116803)

Main Car Park

The pick up/drop off zone is not a parking space. Please keep the engine running, drop off or collect your passenger/s and continue on your way so the traffic keeps flowing (and does not bank up onto the road).

When parking in the other section of the car park, please pull all the way into the car park spaces – as close as you safely can to the bollard marking the front of the car park.

Please travel slowly through the car park and check for students crossing between the sections/bays.



Personal Accident & Property Insurance

The Department (which includes our school) does not have personal accident insurance for students.

If a student is injured at school or while participating in a school activity (including offsite) and requires medical treatment, parents/carers are responsible for all of their child's medical expenses. This includes transport costs such as ambulance costs (which may include an air ambulance if considered necessary)

The Department (which includes our school) does not have personal property insurance for staff and/or students.

Items of personal property that are lost, stolen or damaged at school or during school excursions are not the responsibility of Heathcote Primary School or the Department. Staff and students are reminded not to bring items of value to school or on school excursions.

Heathcote Primary School encourages parents/carers to consider obtaining their own accident insurance for students and property of value that may be brought to school.

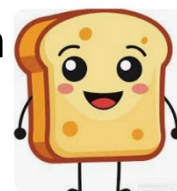
Breakfast Club

Tuesday & Thursday

8:40am—8:55am

HPS Kitchen

Toast, cereal, milk, fruit available



Community Happenings—Wellbeing

PARENT SUPPORT AND EDUCATION SESSIONS TERM 2, 2026



The Loddon Children's Health & Wellbeing Local offers free weekly education sessions that address mental health and wellbeing. The sessions are run by a mental health or allied health clinician at the Local.

Sessions are open to any parents or carers of children aged 0-11.

Why join in?

- Talk to Local staff about your child.
- Ask any practical questions you have about parenting now.
- Gain support for yourself as a parent.

Where: The Loddon Child and Health Wellbeing Local, 19 Helm St, Kangaroo Flat 3555. Enter via the green porch at the back of the site.

Dates and topics: Wednesdays (face to face)

WHEN	TIME	TOPIC
Apr 22	9.30am	ADHD What is it and How Can I Help?
Apr 29	9.30am	What Is Autism and How Can I Help?
May 6th	9.30am	Parent Wellbeing
May 13	9.30am	All About Anger
May 20	9.30am	Managing Big Feelings
May 27	9.30am	Tech Troubles
Jun 3	9.30am	Anxiety in kids
Jun 10	9.30am	Family rules and consequences
Jun 17	9.30am	Sleep

If you have any questions, please contact Annette Clemments on 1800 433 977.

Book in via email icfhwlocals@bchs.com.au. Please state your name, your child's name and the session you wish to attend.



The Children's Health and Wellbeing Local is jointly funded by the Victorian Government and the Australian Government through the Head to Health Kids Initiative.

In partnership with Bendigo Health, Bendigo and District Aboriginal Cooperative, Njernda Aboriginal Corporation, Echuca Regional Health, North Central LLEN, Maryborough District Health, Dhekaya Health and Sunbury and Cobaw Community Health



Community Happenings



Heathcote Primary School
Respect - Learning - Teamwork - Responsibility



Heathcote Primary School

Accepting enrolments for
Foundation, 2027

Wed. 20th May
School Tour
at 4pm
Information
Session
at 4:30pm



Heathcote Primary School
Respect - Learning - Teamwork - Responsibility

Phone: (03) 5433 3090
Email: heathcote.ps@education.vic.gov.au
Please contact us to arrange a school tour

Community Happenings



Heathcote Primary School
Respect - Learning - Teamwork - Responsibility

START PLAYING

LEARN THE BASICS, FIND YOUR FEET AND MAKE A BUNCH OF NEW FRIENDS AT YOUR LOCAL WOOLWORTHS NETSETGO CENTRE.

PLAY NETBALL



Come join us! Thursdays, 4pm - 5pm
Heathcote Tennis courts Starting Week 1, Term 2
(Thursday 23rd April)



HEATHCOTE PANTHERS WINTER SEASON

Term 2 & Term 3 2026

We are now seeking expressions of interest for our Junior Basketball Winter Season

- Under 10 Boys born 2017-2018
- Under 12 Boys born 2015-2016
- Under 14 Boys born 2013-2014
- Under 16 Boys born 2011-2012

TRAINING SCHEDULE:

- Under 10 & Under 12 - Monday 4pm - 5pm
- Under 14 - Monday 5pm - 6pm
- Under 16 - Monday 5:30pm - 6:30pm

**Training times may vary depending on participant numbers **

- All welcome. Training is free of charge.
- Competition games are played at Red Energy Arena, Bendigo.
- Please contact Alan 0418 589 020 or Kristyn 0418 852 339

www.facebook.com/HeathcotePanthersBasketball

LOCATION: Barrack Reserve Stadium, Heathcote.



The grass stains you get playing as a kid stay with you your whole life. So for fun, friendship, and getting your hands dirty, it's gotta be NAB AFL Auskick.

PLAY.AFL/AUSKICK

HEATHCOTE AUSKICK CENTRE

THURSDAY | 4PM - 5PM
STARTING 30TH APRIL | BARRACK RESERVE

Auskick Coordinator | Jess Day



REGISTER NOW



SUPPORTING NEURODIVERGENT CHILDREN IN COMMUNITY SPORT

FREE WORKSHOP FOR SPORTS COACHES & PHYSICAL ACTIVITY PROVIDERS IN GREATER BENDIGO

Monday 11th May, 6pm-8.30pm
@ Epsom Huntly Recreation Reserve

or
Sunday 21st June, 2pm-4.30pm
@ Lake Weeroona Pavilion

or
Wednesday 8th July, 6pm-8.30pm
@ Lake Weeroona Pavilion

Light refreshments provided



Scan the QR code to register for the workshop or visit:
<https://www.trybooking.com/DKRWV>

This FREE workshop will help community sports clubs and physical activity providers understand neurodiversity and how to implement practical strategies to create inclusive, supportive environments for neurodivergent children. This interactive workshop is a neuro-affirming session developed and facilitated by people with lived experience

Contact Jo at Sports Focus for further information on 5442 3101 or joc@sportsfocus.com.au



Community Happenings



Heathcote Primary School
Respect - Learning - Teamwork - Responsibility

FREE PLAYGROUP

10am-12pm
Every Wednesday
165 High Street Bunbunarik

St John's Anglican Church Heathcote

TRINITY ACADEMY

Baby & Child First Aid + CPR

Heathcote Bowls Club

As parents and carers of children it is vital that you feel confident and competent to identify potential risks and manage childhood accidents, injuries and illnesses. Join one of these free sessions to empower yourself with these skills. **Babies welcome to attend**



Tuesday May 26th
11-2pm



Tuesday September 29th
11-2pm



scan the QR code to book or head to our website www.thesisterhoodproject.com.au

Bendigo Bank
Community Bank
Heathcote & District
and Nagambie



Mariah's Musicians

facebook.com/mariahsmusicians

MUSIC LESSONS AVAILABLE WITH MARIAH MCCARTHY

Guitar, piano, ukulele and voice lessons
Private & shared available

Enquire now -
mariahsmccarthy@gmail.com



FINANCIAL ASSISTANCE

INFORMATION FOR FAMILIES

Every Victorian child should have access to the world of learning opportunities that exist beyond the classroom. The Camps, Sports and Excursions Fund helps ensure that no student will miss out on the opportunity to join their classmates for important, educational and fun activities. It is part of making Victoria the Education State and the Government's commitment to breaking the link between a student's financial circumstances and their outcomes.

CAMPS, SPORTS and EXCURSIONS FUND (CSEF)

School camps provide children with inspiring experiences in the great outdoors. Excursions encourage a deeper understanding of how the world works while sports teach teamwork, discipline and leadership. All are a part of a healthy curriculum.

CSEF is provided by the Victorian Government to assist eligible families to cover the costs of school excursions, camps and sporting activities.

If you hold a valid means-tested concession card or support an out of home care student you may be eligible for CSEF. A special consideration category also exists for asylum seeker and refugee families. The allowance is paid directly to the school to use towards expenses relating to camps, excursions or sporting activities for the benefit of your child

The annual CSEF amount per student is \$400 for all school students.

HOW TO APPLY

New applicants should contact the school office to obtain a CSEF application form or download from the website below.

If you applied for CSEF at your child's school last year, you do not need to complete an application form this year unless there has been a change in your family circumstances.

You only need to complete an application form if any of the following changes have occurred:

- **new student enrolments:** your child has started or changed schools this year.
- **changed family circumstances:** such as a change of custody, change of name, concession card number, or new siblings commencing this year.

Check with the school office if you are unsure.

MORE INFORMATION

For more information about CSEF visit:

<https://www.vic.gov.au/camps-sports-and-excursions-fund>

If you hold a current healthcare card or a Centrelink pensioner card you may be eligible to apply for CSEF. CSEF provides financial assistance for families to use for camps, excursions and school sports. If you think you may be eligible, please contact the school office.

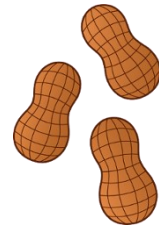
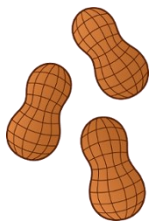


School Bank Details

Account Name: Heathcote Primary School Official Account

BSB: 083 001

ACCOUNT: 71 938 5618



School and Department policies
are available on the
[school website.](#)

SCHOLASTIC
Book Club LOOP
for Parents

LOOP is the Scholastic Book Club
Linked Online Ordering & Payment platform for parents.
To order and pay for Scholastic Book Club by credit card visit:
www.scholastic.com.au/LOOP

GET IT ON
Google play

Download on the
App Store