



Heathcote Primary School

Newsletter

Telephone: (03) 5433 3090

heathcote.ps@education.vic.gov.au

Issue No. 18

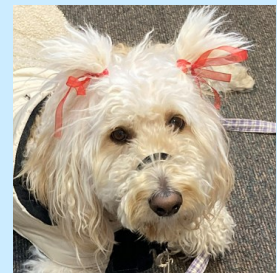
19th June 2026

At Heathcote PS we value... Respect Learning Teamwork Responsibility

We acknowledge that we are on the traditional lands of the Taungurung people and we pay our respects to their Elders, past, present and emerging.

What's Happening in Term 2?

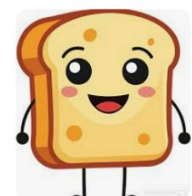
	Friday 19th June	Grade 2 local excursion (as part of Milo's Camp)
Week 10	Monday 23rd June	Lions Eye Health Program (details sent home 29/5/26)
	Thursday 25th June	JSC Wacky Socks & Locks Day (gold coin donation for BARC) <i>Students (and canines!) are invited to come to school wearing crazy socks and with crazy hair. Details on page 10.</i>
		Senior Library Visits (3/4HP, 3/4N, 5/6F, 5/6MG)
	Friday 26th June	End of Term 2 (early dismissal @ 2pm)



Breakfast Club in the Kitchen

Tuesday & Thursday, 8:40am—8:55am

Toast, cereal, milk, fruit available



2026 - What's Due?

Friday 19th June

Vision Screening form (for Lions Eye Health program)

Friday 31st July

2027 Foundation enrolment forms

What's Happening in 2026?

Term 3 Week 1	Monday 13th July	Learning Conversation Day (alternate timetable, bookings open)
Week 2	Wednesday 22nd July* *Potential to be 21/7/26	Division football (Gr 5/6 football team)
Week 3	Wednesday 29th July	Division netball (Gr 5/6 netball team)
Week 5	Wednesday 12th August	Real Schools Parent Information Session (after school)
Week 10	Friday 18th September	End of Term 3 (early dismissal @ 2pm)
Term 4 Week 1	Monday 5th October	Start of Term 4
Week 3	Friday 23rd October	Division cricket (Gr 5/6 cricket team)
Week 4	Mon 26th—Fri 30th Oct.	Swimming lessons—Foundation, 1/2JS & 1/2M
Week 7	Tues. 17th—Thurs. 19th Nov	Energy Breakthrough Camp (pushcarts)
Week 8	Mon. 23rd—Wed. 25th Nov.	Grade 5/6 Camp
Week 10	Tuesday 8th December	Statewide Transition Day
	Thursday 10th December	Grade 6 Graduation
Week 11	Friday 18th December	End of Term 4 (early dismissal @ 1:30pm)

Whole School Assembly

Fridays, 9:05am—9:25am, astroturf area

Please join us to celebrate achievements and milestones from the 'week that was'
In the event of inclement weather, assembly will be online (meeting link will be sent)

Please note that more dates will be added to the above list throughout the year.

New dates included in this newsletter for the first time are highlighted in yellow for convenience.



Heathcote Primary School

Respect ~ Learning ~ Teamwork ~ Responsibility

VALUES AWARDS

SWPBS FOCUS: We follow classroom expectations.

	Student	Reason
F	Charlie	For consistently trying to follow classroom expectations and always trying his best. Well done, Charlie.
1/2JS	Jack R	For consistently trying his best to follow classroom expectations and always being prepared to have a go. Well done, Jack!
1/2M	Hope	For showing persistence in following class expectations and contributing positively to our classroom. Great job, Hope!
3/4HP	Malina	For consistently showing our school values every day. You are a kind, respectful and responsible member of our classroom who leads by example. Well done, Malina!
3/4N	Ace	For always doing the right thing and following classroom expectations. Well done, Ace!
5/6F	Savannah	For consistently following classroom expectations and always trying your best.
5/6MG	Zelda	For consistently following classroom expectations and coming to school each day ready to learn with a positive attitude.

KINDNESS AWARDS

Students who consistently demonstrate acts of kindness, compassion and empathy towards others, promoting a positive and inclusive school environment.

	Student	Reason
Middle Unit	Jaimee	For the kindness and care she brings to our classroom. She is building positive friendships and helping make our classroom a welcoming place. Well done, Jaimee
Senior Unit	Matteo	For showing kindness by checking in with injured players during a game of soccer, even when they are from another school.

Congratulations to our award winners!

These awards were presented at our assembly on Friday 19th June

WACKY LOCKS AND SOCKS DAY

Junior School Council is organising a Wacky Locks and Socks Day. Come along in your wackiest hair dos and your most outrageous socks. This fundraiser will be on Thursday 25th June, 2026. We are raising money for the Bendigo Animal Relief Centre (BARC). BARC is an organisation that is a temporary home for your lost or new best friend. BARC endeavours to create a community of responsible pet owners. If you would like to be a part of this fun day then please bring a gold coin donation and go wild with your hair and socks.

On behalf of Junior School Council,

Em-Rose, Georgia and Jessica



Georgia

Ryker

Ashley



*Students have the option of wearing casual clothes to school on their birthday
(or the closest school day to their birthday if their birthday falls on the weekend
or in the school holidays)*

Wellbeing News



Heathcote Primary School
Respect ~ Learning ~ Teamwork ~ Responsibility

Hello families,

Welcome to Week 10! This week I am highlighting the services provided by Bendigo Community Health Service. BCHS provides access to doctors and specialists, allied health services, counselling, and children and family services. For more information, please see the information below. A copy of the information is also attached with this week's newsletter (for convenience regarding the hyperlinks in the subheadings)

As BCHS is a not-for-profit healthcare provider, all fees are directed back into improving and delivering services and programs. In keeping with their commitment to provide equitable healthcare, the maximum out-of-pocket fee for a consultation is kept as small as possible. For more information on out-of-pocket costs for BCHS consultations, go to the link at [Fees & payment options](#).

Wishing you all a wonderful mid-year break,

Cett Sergi

Mental Health and Wellbeing Leader

Heathcote Primary School

03 5433 3090



Bendigo Community Health Services

Address: 165-171 Hargreaves St, Bendigo
Branches in Kangaroo Flat, White Hills, North Bendigo,
Eaglehawk & Elmore
Ph: 1800 338 663

Bendigo Community Health Services is a not-for-profit organisation working with the community to achieve better health and wellbeing outcomes for everyone.

Alcohol and Drugs

Residential Withdrawal Support Service
At-home Withdrawal Support Service
Pharmacotherapy
Intake and Assessment
Counselling
Family Drug Support Program
Care and Recovery Coordination
Peer Support Worker
Mobile Drug Safety Worker

Children and Families

Children's Health Services
Family Services
Loddon Children's Health & Wellbeing Local
Bendigo Family Day Care
smalltalk Supported Playgroups
Stepping Stones Early Childhood Intervention
School Readiness Program

Doctors and Specialists

GP Clinic, Women's Health Clinic, Men's Health Clinic, Chronic Disease Management, Doctors in Secondary Schools, Quit Smoking & Vaping, Sexual & Reproductive Health Hub, Endometriosis & Pelvic Pain Clinic

Former refugees & migrants

Bendigo Community Health Services' Settlement and Cultural Diversity teams provide essential support for people of refugee and migrant backgrounds in Bendigo.

Allied Health Services

Physiotherapy
Exercise Physiology
Podiatry
Paediatric Podiatry

Counselling & Mental Health

BCHS's mental health clinicians provide support, counselling, mental state assessments, health monitoring and connection with other services involved in your care.

Youth

Bendigo Community Health Services provides specialist health and wellbeing services to young people aged 12-25, via our general practitioner (GP) and allied health clinics, Doctors in Secondary Schools program, and headspace Bendigo.

Division Soccer



Heathcote Primary School
Respect ~ Learning ~ Teamwork ~ Responsibility



Congratulations to our Grade 5/6 soccer team for their outstanding team spirit, sportsmanship and soccer skills. The team finished top of B Division and were runners up in the Grand Final after playing the top team in Division A. Thank you to coaches Lachie and Miss Matthews for supporting the team and families for attending on the day.

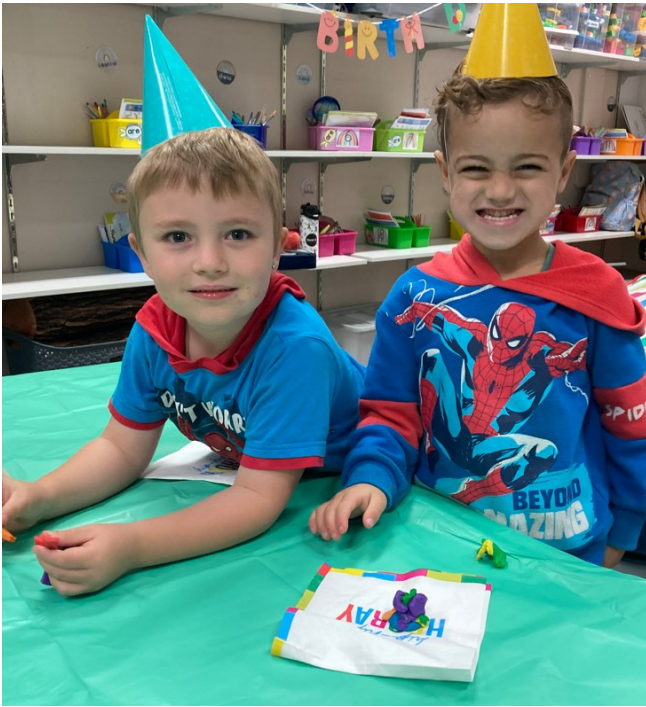


Milo's Party & Camp



Heathcote Primary School
Respect ~ Learning ~ Teamwork ~ Responsibility

Happy 2nd birthday to Milo Monkey! Milo celebrated with a party, afternoon games and an overnight camp with Grade 2s.



Milo's Party & Camp



Heathcote Primary School
Respect ~ Learning ~ Teamwork ~ Responsibility

On Thursday, the Grade 2s had a sleepover. Our favourite thing was the night walk. We didn't see any animals but we saw a plane! We watched a movie called Hoppers and ate popcorn. We would like to thank Miss H, Mrs Skipper, Ms John, Mrs Mac and Rebecca.

By Georgia and Hazel





SCHOOL HOLIDAY PROGRAM TERM TWO 2026

These programs offer parents and their children 7-11 support with mental health and wellbeing. The one-hour sessions are run by mental health staff from the Loddon Children's Health & Wellbeing Local. Sessions are fun, educational and interactive.

Groups are small: five children with one parent per child attending.



TOPICS

10.30am Worry in children or Managing feelings [4-6 year olds](#) [Please book in](#)

1.30pm Social skills for kids or Managing Big Feelings [7-11 year olds](#) [Please book in](#)

2.30am Parent Drop in, with questions to ask the mental health staff about parenting and or your child. Open to any age group. Kids can play in the room while we chat.

[No need to book in for this session](#)

DATES

30th June Bendigo, The Local 10.30am Worry 4-6 year olds, 1.30pm Social skills 7-11 year olds

9th July Bendigo, The Local 10.30am Managing feelings 4-6 year olds,
1.30pm 7-11 year olds

Bookings are essential:

Please call Annette or admin on 1800 433 977 or email us which sessions you want to attend, your child's name and age, your name and contact details including telephone number and email address, icfhlocals@bchs.com.au.

We will be in touch prior to the session to confirm details including how to access the venue.



In partnership with Bendigo Health, Bendigo and District Aboriginal Cooperative, Njemda Aboriginal Corporation, Echuca Regional Health, North Central LLEN Maryborough District Health, Dhelkaya Health and Omnia Community Health

The Children's Health and Wellbeing Local is jointly funded by the Victorian Government and the Australian Government through the Medicare Mental Health Kids Hub initiative.

OFFICIAL



SCHOOL HOLIDAY PROGRAM TERM TWO 2026

These programs offer parents and their children 7-11 support with mental health and wellbeing. The one-hour sessions are run by mental health staff from the Loddon Children's Health & Wellbeing Local. Sessions are fun, educational and interactive. **Groups are small: five children with one parent per child attending.**



TOPICS

10. 30am Worry in children **Please book in**

1.30pm All about Anger **Please book in**

2.30am Parent Drop in with questions to ask the mental health staff about parenting and your child. We will have lots of information for parents to take away. Kids can come too and play while we chat. No need to book for this session.

DATES AND LOCATIONS:

2nd July Kyneton Omini Health 7-12 year olds both sessions

8th July Inglewood, St Mary's Primary School 7-12 year olds

Bookings are essential:

Please call Annette on 1800 433 977 **or** email us with your child's name, which sessions you want to attend, your name, the name of your child and their age. Your contact details including email and telephone number, icfhlocals@bchs.com.au .

We will be in touch prior to the session to confirm details including how to access the venue.

ENERGY BREAKTHROUGH - Volunteers

This year a group of 10 students have been selected to participate in the Energy Breakthrough push cart race which will be held in Maryborough in November. The students have spent some time looking at designs and materials. Next week, we will be deciding on the dimension of our cart.

We would love parents and people from the community to help us build the carts and, if possible, source materials. If you are willing and able to help, are handy at welding and perhaps even have wheels, steel or any other materials we can recycle in our project, then we would love to hear from you.



If you would love to help, please contact David Close at david.close@education.vic.gov.au and let us know how you would like to contribute.

School Community Kilometre Club



Every Friday from 8:30am, our Kilometre Club will be up and running—rain, hail or shine!

Students can join Kerry, Miss H and others are welcome to complete laps around the bike track, building fitness and having fun along the way. Each lap will be counted towards our whole-school total. Our Term 2 goal is to reach 100 laps—let's see how far we can go together! 🏃♀️ 🏃♂️



Walk, run, jog, crawl all abilities welcome



Heathcote Primary School
Respect ~ Learning ~ Teamwork ~ Responsibility

Term 2 Total at Week 8: 283 laps!

Community Reminders



Heathcote Primary School
Respect ~ Learning ~ Teamwork ~ Responsibility

Annual Privacy Reminder for our School Community

Our school collects and uses student and parent personal information for standard school functions or where permitted by law, as stated in the [Schools' privacy policy](#) and the [Schools' privacy collection notice](#).

Our [Photographing, Filming and Recording Students policy](#) describes how we collect and use photographs, video and recordings of students. The policy also explains when parent consent is required and how it can be provided and withdrawn.

We ask parents to also review the guidance we provide on how we use [[Microsoft 365/Google Workspace for Education](#)] safely at the school and what parents can do to further protect their child's information. If after reviewing the guidance, you have any questions or concerns regarding your child using [[Microsoft 365/Google Workspace for Education](#)], please contact the school.

For more information about privacy, refer to: [Schools' privacy policy: information for parents](#). This information is also available in eleven community languages:

Amharic
Arabic
Chinese
Dari
Gujarati
Mandarin
Somali
Sudanese
Turkish
Urdu
Vietnamese

Late Arrivals & Early Departures

If students arrive after 9am or need to leave before 3pm, they need to sign in or sign out at the office. This is done using the Compass portal. 5/6MG visited the office to practise the process.



Mobile Phone Policy (student use)

Department policy requires that students who choose to bring mobile phones to school must have them switched off and securely stored during school hours, including break times.

All schools are required to have a local school policy on mobile phones that reflects this requirement and which provides details for the implementation of the policy at their school.

Our school's mobile phone policy (student use) is available on the school website [HERE](#).

In a nutshell, mobile phones and smart watches with mobile phone capabilities are to be:

- switched off during school hours
- dropped off at the office for secure storage upon arrival. Eg. Not kept in school bags.
- collected at the end of the school day.



Community Reminders



Heathcote Primary School
Respect ~ Learning ~ Teamwork ~ Responsibility

Yard Supervision

The school yard is supervised from 8:45am until 9am. There is an announcement at 8:45am to signal classroom doors are open. Students are able to put their bags in their room, complete any before school routines and monitor jobs before heading back outside to play. The hospital end of the oval and playground are out of bounds before school.

After school, staff are on bus and crossing duty (which includes carpark duty in the main carpark). The main yard is not supervised. Any students who have not been collected by 3:15pm are taken to the office.

After school care is available through Trinity Academy. A bus from Heathcote PS drops after school care passengers at Trinity. For bookings, please contact Trinity Academy on [\(03\) 4411 6803](tel:0344116803)

Main Car Park

The pick up/drop off zone is not a parking space. Please keep the engine running, drop off or collect your passenger/s and continue on your way so the traffic keeps flowing (and does not bank up onto the road).

When parking in the other section of the car park, please pull all the way into the car park spaces – as close as you safely can to the bollard marking the front of the car park.

Please travel slowly through the car park and check for students crossing between the sections/bays.



Personal Accident & Property Insurance

The Department (which includes our school) does not have personal accident insurance for students.

If a student is injured at school or while participating in a school activity (including offsite) and requires medical treatment, parents/carers are responsible for all of their child's medical expenses. This includes transport costs such as ambulance costs (which may include an air ambulance if considered necessary)

The Department (which includes our school) does not have personal property insurance for staff and/or students.

Items of personal property that are lost, stolen or damaged at school or during school excursions are not the responsibility of Heathcote Primary School or the Department. Staff and students are reminded not to bring items of value to school or on school excursions.

Heathcote Primary School encourages parents/carers to consider obtaining their own accident insurance for students and property of value that may be brought to school.

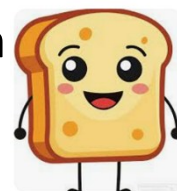
Breakfast Club

Tuesday & Thursday

8:40am—8:55am

HPS Kitchen

Toast, cereal, milk, fruit available



Community Happenings



Heathcote Primary School
Respect - Learning - Teamwork - Responsibility

START PLAYING

LEARN THE BASICS, FIND YOUR FEET AND MAKE A BUNCH OF NEW FRIENDS AT YOUR LOCAL WOOLWORTHS NETSETGO CENTRE.

PLAY NETBALL



Come join us!
Heathcote Tennis courts

Thursdays, 4pm - 5pm
Starting Week 1, Term 2
(Thursday 23rd April)

SCAN HERE

We Want Your Opinion!

Heathcote Health and Bendigo Council are bringing a new exercise opportunity to Heathcote. We have 3 simple questions we'd love your feedback on to make it as accessible as possible.

Scan here to complete a quick survey



HEATHCOTE PANTHERS WINTER SEASON

Term 2 & Term 3 2026

We are now seeking expressions of interest for our Junior Basketball Winter Season

- Under 10 Boys born 2017-2018
- Under 12 Boys born 2015-2016
- Under 14 Boys born 2013-2014
- Under 16 Boys born 2011-2012

TRAINING SCHEDULE:

- Under 10 & Under 12 - Monday 4pm - 5pm
- Under 14 - Monday 5pm - 6pm
- Under 16 - Monday 5:30pm - 6:30pm

**Training times may vary depending on participant numbers **

- All welcome. Training is free of charge.
- Competition games are played at Red Energy Arena, Bendigo.

- Please contact Alan 0418 589 020 or Kristyn 0418 852 339

www.facebook.com/HeathcotePanthersBasketball

LOCATION:

Barrack Reserve Stadium, Heathcote.



SCHOOL HOLIDAYS SORTED

PLAY.AFL/HOLIDAYPROGRAMS

HEATHCOTE AFL SCHOOL HOLIDAY PROGRAM

MONDAY 29TH JUNE | 9AM-3PM
BARRACK RECREATION RESERVE
BOYS AND GIRLS AGED 4-12
\$55 PER PERSON - FOOTY TO KEEP!



Community Happenings



Heathcote Primary School
Respect - Learning - Teamwork - Responsibility

COURT HOUSE CRAFTS.

We are a Non Profit Community Co Operative
And boast an extensive and diverse range of.....

Arts & Crafts.

Hand Knitted and Sewn Garments.

Dressmaking Fabrics & Remnants.

Quilts, Quilting Fabrics & Accessories

Knitting Wool and yarns.

Range of Embroidery Threads,
Haberdashery, Laces, Buttons & Ribbons.

Follow us on Facebook.....

heathcotecourthousecrafts



Court House Crafts.

170 High St.,
Heathcote,
Victoria.

Phone 0435180683.

How to access support

For support in your area:

- Call: 1800 433 977
- Email: icfhlocals@bchs.com.au
- loddonchwl.com.au

Contact us to find out how we can help.

Referrals

We are currently accepting referrals from target and partner health services. See our website for details.

Fees and cost

This is a fully-funded service, there is no cost.

Interpreters and translators

Let us know what type of interpreter you need when you make your appointment.

Connecting you with others

Our support network is wide-reaching. If our services aren't the right ones for your child, we can connect you to those that will better meet their needs.

If you need help in a crisis

We are not a crisis service. In an emergency where there is immediate risk of harm to anyone, call Triple Zero (000).

For 24-hour crisis support,
call Lifeline on 13 11 14.

Our partners

The Loddon Children's Health and Wellbeing Local is run by Bendigo Community Health Services.

We bring together and coordinate services with the following partners:

- Bendigo Health
- Bendigo & District Aboriginal Co-operative
- Dhelkaya Health
- Echuca Regional Health
- Maryborough District Health Service
- Njemda Aboriginal Corporation
- North Central LLEN
- Sunbury and Cobaw Community Health

Options for access

Select services are available in a range of community settings in association with our partners.

We know getting to appointments isn't always easy. Where practical, we offer telephone, online and in-person options.



children's health
& wellbeing local

Free support for children and their families

Supporting the healthy development and emotional wellbeing of children aged 0-11

Get to know the Loddon Children's
Health and Wellbeing Local



The Children's Health and Wellbeing Local is jointly funded by the Victorian Government and the Australian Government through the Head to Health Kids Initiative.



Updated February 2025

Community Happenings



Heathcote Primary School
Respect - Learning - Teamwork - Responsibility

FREE PLAYGROUP

10am-12pm
Every Wednesday
165 High Street Bunburarik

St John's Anglican Church Heathcote

TRINITY ACADEMY

Baby & Child First Aid + CPR

Heathcote Bowls Club

As parents and carers of children it is vital that you feel confident and competent to identify potential risks and manage childhood accidents, injuries and illnesses. Join one of these free sessions to empower yourself with these skills. **Babies welcome to attend**



Tuesday May 26th
11-2pm



Tuesday September 29th
11-2pm



scan the QR code to book or head to our website www.thesisterhoodproject.com.au

Bendigo Bank
Community Bank
Heathcote & District
and Nagambie



Mariah's Musicians

facebook.com/mariahsmusicians

MUSIC LESSONS AVAILABLE WITH MARIAH MCCARTHY

Guitar, piano, ukulele and voice lessons
Private & shared available

Enquire now -
mariahmccarthy@gmail.com



FINANCIAL ASSISTANCE

INFORMATION FOR FAMILIES

Every Victorian child should have access to the world of learning opportunities that exist beyond the classroom. The Camps, Sports and Excursions Fund helps ensure that no student will miss out on the opportunity to join their classmates for important, educational and fun activities. It is part of making Victoria the Education State and the Government's commitment to breaking the link between a student's financial circumstances and their outcomes.

CAMPS, SPORTS and EXCURSIONS FUND (CSEF)

School camps provide children with inspiring experiences in the great outdoors. Excursions encourage a deeper understanding of how the world works while sports teach teamwork, discipline and leadership. All are a part of a healthy curriculum.

CSEF is provided by the Victorian Government to assist eligible families to cover the costs of school excursions, camps and sporting activities.

If you hold a valid means-tested concession card or support an out of home care student you may be eligible for CSEF. A special consideration category also exists for asylum seeker and refugee families. The allowance is paid directly to the school to use towards expenses relating to camps, excursions or sporting activities for the benefit of your child

The annual CSEF amount per student is \$400 for all school students.

HOW TO APPLY

New applicants should contact the school office to obtain a CSEF application form or download from the website below.

If you applied for CSEF at your child's school last year, you do not need to complete an application form this year unless there has been a change in your family circumstances.

You only need to complete an application form if any of the following changes have occurred:

- **new student enrolments:** your child has started or changed schools this year.
- **changed family circumstances:** such as a change of custody, change of name, concession card number, or new siblings commencing this year.

Check with the school office if you are unsure.

MORE INFORMATION

For more information about CSEF visit:

<https://www.vic.gov.au/camps-sports-and-excursions-fund>

If you hold a current healthcare card or a Centrelink pensioner card you may be eligible to apply for CSEF. CSEF provides financial assistance for families to use for camps, excursions and school sports. If you think you may be eligible, please contact the school office.

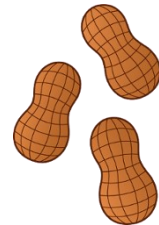
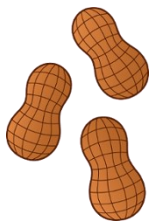


School Bank Details

Account Name: Heathcote Primary School Official Account

BSB: 083 001

ACCOUNT: 71 938 5618



School and Department policies
are available on the
[school website.](#)

SCHOLASTIC
Book Club LOOP
for Parents

LOOP is the Scholastic Book Club
Linked Online Ordering & Payment platform for parents.
To order and pay for Scholastic Book Club by credit card visit:
www.scholastic.com.au/LOOP

GET IT ON
Google play

Download on the
App Store