



Heathcote Primary School

Newsletter

Telephone: (03) 5433 3090

heathcote.ps@education.vic.gov.au

Issue No. 2

6th February 2026

At Heathcote PS we value... Respect Learning Teamwork Responsibility

We acknowledge that we are on the traditional lands of the Taungurung people and we pay our respects to their Elders, past, present and emerging.

What's Happening?

Week 3	Wednesday 11th February	Foundation Rest / Assessment Day (no Foundation students at school unless attending assessment)
	Thursday 12th February	F-2 Literacy Family Information Session @ 3:15pm
Week 4	Wednesday 18th February	Foundation Rest / Assessment Day (no Foundation students at school unless attending assessment)
Week 5	Wednesday 25th February	Foundation Rest / Assessment Day (no Foundation students at school unless attending assessment)
Week 10	Thursday 2nd April	End of Term 1 (early dismissal @ 2pm)

Whole School Assembly

Fridays, 9:05am—9:25am, astroturf area

Please join us to celebrate achievements and milestones from the 'week that was'
In the event of inclement weather, assembly will be online (meeting link will be sent)

2026 - What's Due?

Friday 6th February	Award Certificate Creation Challenge (optional)
Friday 13th February	Updated medical plans and medications (eg. Asthma, anaphylaxis, other)



Heathcote Primary School
Respect - Learning - Teamwork - Responsibility

VALUES AWARDS SWPBS FOCUS: We Participate

	Student	Reason
F	Saskia	For participating even when finding some activities tricky. Well done Saskia on trying your best!
1/2JS	George	For outstanding enthusiasm and consistently active participation in the class activities this week. Your contributions make the classroom a better place to learn!
1/2M	Amelia	For consistently participating in all activities and contributing to our classroom in a positive way. Great job Amelia!
3/4HP	Anthony	For coming to school ready to learn and joining in everyday!
3/4N	Jaydy	For contributing to class discussions and giving everything a go! Well done!
5/6F	Teddy	For regularly participating in class discussions.
5/6MG	Lexie	For participating in group activities and working well with each other.

KINDNESS AWARDS

Students who consistently demonstrate acts of kindness, compassion and empathy towards others, promoting a positive and inclusive school environment.

	Student	Reason
Junior Unit	Ira	For consistently showing kindness and inclusiveness whilst completing day to day activities
Middle Unit	Nathan	For always supporting those around him and showing kindness towards others!
Senior Unit	Zelda	For always being kind and supportive of others.

Congratulations to our award winners!

These awards were presented at assembly on Friday 6th February.

Principal's Awards

Student	Reason
Georgia M	For using her initiative to pack up sandpit toys at the end of Break 2.
Hazel P	For helping to look after our sports equipment and packing it away at the end of Break 2.
Tauri B	For his kindness and patience helping a 'tangled up teacher'.

This year, we have introduced Class Dojo to Heathcote Primary School. We have done this for multiple reasons, including:



- To share more student learning with families. Dojo provides a platform to send photos, videos and audio of student learning to families.
- To increase communication between teachers and families in an 'easy to use' way. Dojo has a 'Class Story' feature providing an opportunity for teachers to post updates from classroom activities, share reminders and key information.
- To let families know when students receive a values card. Each time a student receives a values card, a Dojo point is added and families receive a notification so can share in the celebration.

Compass will continue to be used as the main 'administrative' platform. For example, for absence notifications, student reports, sharing the school newsletter.

Dojo Fun Facts:



School Insights

 **36**

Messages sent to families
17 Last week

 **14**

Photos and videos shared
8 Last week

Principal's Report

Our first full week of the 2026 school year brought us the continuation of our Ready to Learn program along with our first whole school assembly and the start of specialist classes. All students participate in weekly Art, PE, Performing Arts and STEM classes throughout the year. In Semester 1, half of our Grade 3-6 classes attend Garden sessions and the other half attend Kitchen. They will swap for Semester 2. It was hard to know who was most excited about the start of the kitchen program—3/4N, 5/6F...or Evie! Tacos and M&M biscuits for students and special canine friendly treats for Evie were on the menu.

It was terrific that so many people were available and able to attend assembly on Friday morning. Congratulations to our Grade 6 captains for leading their first assembly with such confidence. They met the day before to organise who would lead each section, practised their roles and then made sure everything was set up and ready to roll on Friday morning. The certificate template for the weekly values awards was designed by two of our leaders and will be used until we finalise the voting for our new certificates from the certificate creation challenge. Thank you to everyone for your submissions!

We have made some changes to assembly presentations. There will be one values award presented to a student from each class (instead of two), certificates for 50, 100, 150, 200 and 250 nights of reading and Gold awards. Bronze and Silver certificates will be presented in classrooms or at unit assemblies. Last year at School Council it was suggested by a councillor that we introduce a Principal's Award to recognise extra special achievements or acts, for students who 'go the extra mile'. School Council agreed and these will also be presented at assembly.

There are a number of reminders in the newsletter, including the school policy on student mobile phones, details about yard supervision and the Department's policy on personal accident and property insurance. Please familiarise yourself with them if you haven't already had an opportunity to do so.

One of the many things I like about Heathcote PS is how students, staff and families pitch in and volunteer when they see a job that needs doing. Thank you to Liam B and his family for spreading some of the softfall (similar to mulch) at the playground. If you have a spare fifteen minutes and fancy a small workout, please feel free to join the fun. We can supply the shovel, wheelbarrow and rake.

Thank you for the positive feedback about the introduction of ClassDojo. We've included some 'fun facts' in this week's newsletter along with the rationale behind its introduction. If you need help registering, please see your child's classroom teacher.

I hope everyone has a terrific week.

Carolyn



HAPPY BIRTHDAY

Oliver K

Charlie M

Amelia B

Lilah

Hazel P

Jaydy



*Students have the option of wearing casual clothes to school on their birthday
(or the closest school day to their birthday if their birthday falls on the weekend
or in the school holidays)*



From September to April, everyone needs to wear a plain coloured, broadbrimmed hat when they are outside. This is part of our SunSmart policy. If you need a hat, the office has got you covered...literally! School hats can be purchased from the office for \$10.

Office Hours
Monday to Friday
8:30am—4pm



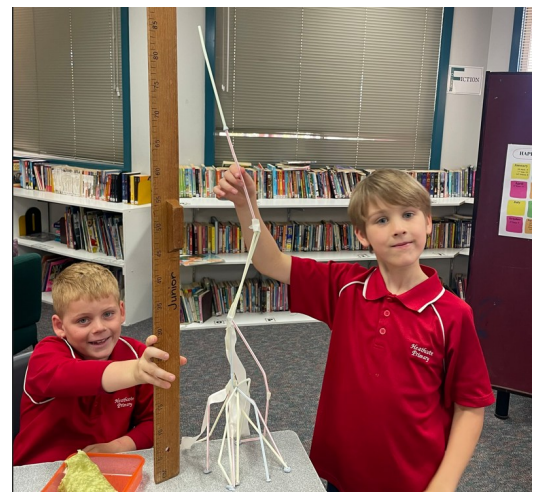
School Wide Positive Behaviour Support

Our expected behaviours matrix is displayed in all learning areas and the main office. As part of our 'Ready to Learn' program, all classes are revisiting the matrix. Throughout the year, students will participate in sessions where they focus on each behaviour explicitly.

Our values cards are earned by students when they demonstrate expected behaviours. When a student earns a values card, they also earn a Dojo point and families receive a notification.

Often students demonstrate multiple expected behaviours at once. For example, during a team challenge, students demonstrated the behaviours:

We share, we use manners and kind words, we use an appropriate voice, we share, we are inclusive, we follow classroom expectations, we participate



HEATHCOTE PRIMARY SCHOOL RESPECT • LEARNING • TEAMWORK • RESPONSIBILITY

	LEARNING		
	ALWAYS	INSIDE	OUTSIDE
RESPECT	<ul style="list-style-type: none"> We use an appropriate voice We use manners and kind words We follow instructions We keep our hands and feet to ourselves 	<ul style="list-style-type: none"> We follow classroom expectations We walk 	<ul style="list-style-type: none"> We leave nature in nature We share our spaces
TEAMWORK	<ul style="list-style-type: none"> We are inclusive We share We wait our turn 	<ul style="list-style-type: none"> We pack up 	<ul style="list-style-type: none"> We choose teams fairly We determine and play by the rules
RESPONSIBILITY	<ul style="list-style-type: none"> We use equipment for its intended purpose We arrive on time We look after school property We place rubbish in the correct bin We use our 'calm down' strategies 	<ul style="list-style-type: none"> We use materials for their intended purpose We participate 	<ul style="list-style-type: none"> We return our sports equipment

Daily Timetable



Heathcote Primary School
Respect ~ Learning ~ Teamwork ~ Responsibility



Daily Timetable

8:45am	Classroom doors open <i>Students take their bag inside and unpack for the day ahead. After doing so, students can go outside to play.</i>
8:57am	Music begins followed by school bell <i>Students make their way to their classroom via the toilets and drink tap (if needed)</i>
9am - 11am	Learning time <i>Includes a healthy snack of fruit or vegetables at approximately 10am and lunch eating time at 10:50am</i>
11am - 11:30am	Break 1
11:30am - 1:30pm	Learning time <i>Includes lunch / snack eating time at 1:20pm</i>
1:30pm - 2pm	Break 2
2pm - 3pm	Learning time
3pm	Home time

Students are encouraged to confirm after school pick up arrangements before starting their school day. For example, will they walk home? Meet a parent/carer in the yard/at the office? Meet a parent/carer at the car park? Will they catch the bus to after school care or catch it home?



Heathcote Primary School
Respect ~ Learning ~ Teamwork ~ Responsibility

Community Reminders

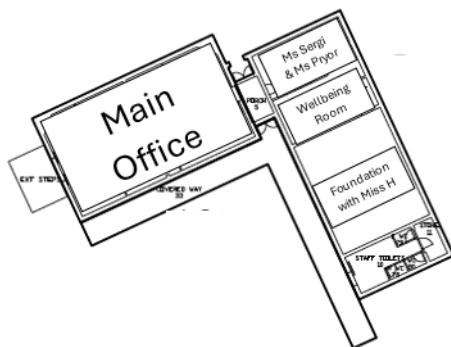


Heathcote Primary School
Respect ~ Learning ~ Teamwork ~ Responsibility

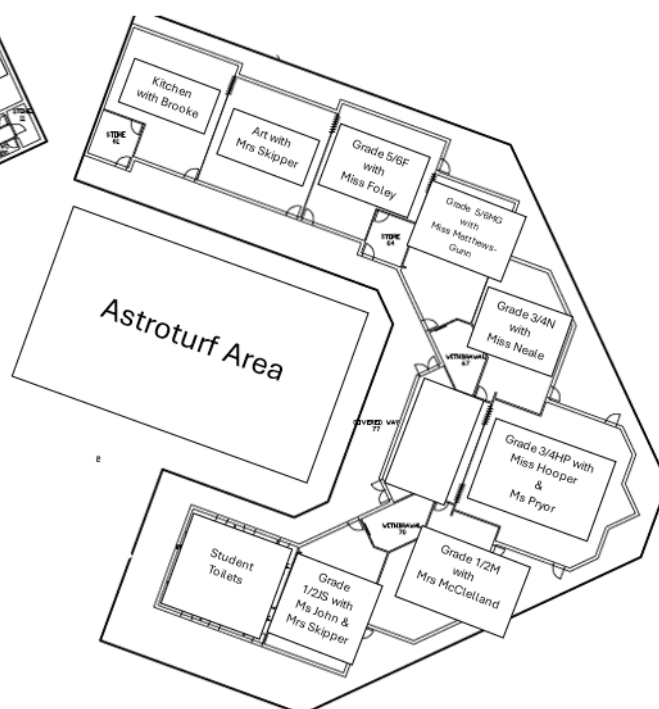
What to pack in school bags?

- **Fruit and/or vegetable snacks.** Students have healthy snacks during class time to help maintain focus and concentration.
- **Lunch.** Students tend to eat their bigger meal at Break 1 to provide energy and brain power for the rest of the day's learning.
- **Snacks.** Students tend to eat their smaller snack/s at Break 2 to boost energy levels for the last part of the day.
- A **broad brimmed, plain hat.** Ideally, it will have the school logo on it but any plain (no patterns or logos) hat is still okay.
- A **drink bottle** filled with water (can be refilled at school)
- **Spare clothes** if you think your child might need them. Eg. Due to a toileting accident or from slipping over in a puddle (more applicable for winter time)

Where is everyone in 2026?



Classroom Locations, 2026



Community Reminders



Heathcote Primary School
Respect ~ Learning ~ Teamwork ~ Responsibility

Classroom Satchels

Every classroom has a red satchel. These are used to transport notes to and from the office. For example, as part of a student's routine when they enter the classroom at the start of the day, they place any notes for the office into the bag. Class monitors take the satchel to the office and return at the end of the day to collect it. If the office has any notes that need to be sent home, the notes are in the satchel when it is picked up by the class monitors.



Late Arrivals & Early Departures

If students arrive after 9am or need to leave before 3pm, they need to sign in or sign out at the office. This is done using the Compass portal. This week, 5/6MG visited the office to practise the process.



Mobile Phone Policy (student use)

Department policy requires that students who choose to bring mobile phones to school must have them switched off and securely stored during school hours, including break times.

All schools are required to have a local school policy on mobile phones that reflects this requirement and which provides details for the implementation of the policy at their school.

Our school's mobile phone policy (student use) is available on the school website [HERE](#).

In a nutshell, mobile phones are to be:

- switched off during school hours
- dropped off at the office for secure storage upon arrival. Eg. Not kept in school bags.
- collected at the end of the school day.



Communication Channels

There are multiple ways information is shared. If you have any questions about accessing Compass or ClassDojo please speak to your child's classroom teacher.

1. Compass
2. Class Dojo—new in 2026!
3. Email
4. Newsletter
5. Website

If you have a question about your child, the first point of contact is their classroom teacher.

Community Reminders



Heathcote Primary School
Respect ~ Learning ~ Teamwork ~ Responsibility

Yard Supervision

The school yard is supervised from 8:45am until 9am. There is an announcement at 8:45am to signal classroom doors are open. Students are able to put their bags in their room, complete any before school routines and monitor jobs before heading back outside to play. The hospital end of the oval and playground are out of bounds before school.

After school, staff are on bus and crossing duty (which includes carpark duty in the main carpark). The main yard is not supervised. Any students who have not been collected by 3:15pm are taken to the office.

After school care is available through Trinity Academy. A bus from Heathcote PS drops after school care passengers at Trinity. For bookings, please contact Trinity Academy on [\(03\) 4411 6803](tel:0344116803)

Main Car Park

The pick up/drop off zone is not a parking space. Please keep the engine running, drop off or collect your passenger/s and continue on your way so the traffic keeps flowing (and does not bank up onto the road).

When parking in the other section of the car park, please pull all the way into the car park spaces – as close as you safely can to the bollard marking the front of the car park.

Please travel slowly through the car park and check for students crossing between the sections/bays.



Personal Accident & Property Insurance

The Department (which includes our school) does not have personal accident insurance for students.

If a student is injured at school or while participating in a school activity (including offsite) and requires medical treatment, parents/carers are responsible for all of their child's medical expenses. This includes transport costs such as ambulance costs (which may include an air ambulance if considered necessary)

The Department (which includes our school) does not have personal property insurance for staff and/or students.

Items of personal property that are lost, stolen or damaged at school or during school excursions are not the responsibility of Heathcote Primary School or the Department. Staff and students are reminded not to bring items of value to school or on school excursions.

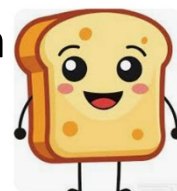
Heathcote Primary School encourages parents/carers to consider obtaining their own accident insurance for students and property of value that may be brought to school.

Breakfast Club*

Tuesday & Thursday

8:40am—8:55am

HPS Kitchen



Toast, cereal, milk, fruit available

**Starts in Week 2*

Newsletter and website article: Schools in Category 3 on the Bushfire At-Risk Register and the Category 4 List

This article has been developed by the Department of Education for schools to publish in their newsletter and school website.

This information has been developed to answer frequently asked questions regarding the Bushfire At-Risk Register (BARR) and Category 4 list and our school's closure on a Catastrophic fire danger day in your fire weather district.

School preparations for the bushfire season

Each year, we undertake a range of activities to ensure the safety of our school and to prepare for bushfires and grassfires.

An important part of this process is communicating to parents what will happen when certain fire danger ratings are issued to help ensure the safety of students and staff.

Our school has been identified as being at risk of bushfire or grassfire and is a **Category 3 school.**



Our school will **close** on a day forecasted as **Catastrophic fire danger rating** in **Northern Country fire district**.

Closure of the school due to a Catastrophic fire danger rating will be enacted when the Bureau of Meteorology forecast and related public safety messaging are confirmed. Due to uncertainties in the forecast, the timing of this confirmation may vary. Information regarding potential or confirmed Catastrophic fire danger days will be communicated to you by **Compass and post on the school's private Facebook group**.

It is also important to be aware that:

- No one will be on site on days where the school is closed due to a forecast Catastrophic day.
- All bus routes that travel through the Catastrophic area will be cancelled.
- School camps will be cancelled if a Catastrophic fire danger rating day is forecast for fire weather district in which the camp is located, or if the travel involves passing through areas that have Catastrophic fire danger.

As part of preparing our school for the fire season, we have updated and completed our Emergency Management Plan which includes an identified 'Shelter in Place' location if needed. We have also continued to maintain the school grounds to reduce the fuel load.

What can families and the school community do to help us prepare?

- Ensure we have your current contact details, including your mobile phone numbers.

- Keep in touch with us by reading our newsletters, checking our [website](#), by talking to your child's teacher or any other member of the teaching staff about our emergency management plan.
- Make sure your family's bushfire survival plan is up-to-date and includes alternative care arrangements if our school is closed due to Catastrophic fire danger. Further information can be found on the [CFA's website](#).
- Action your family's bushfire survival plan if your own triggers are met. Our school community may be spread out across many areas and some families may be at higher risk than others. Your family's safety is critical, so please let us know if you are actioning your bushfire survival plan and if your children will be absent on these days.
- If your child is old enough, talk to [them about bushfires](#) and your family's bushfire survival plan.

Families are encouraged to action their [Bushfire Survival Plan](#) on Catastrophic fire danger rating days in their district. The safest option is to leave the night before or early on the morning of the Catastrophic day. **On such days, children should never be left at home alone or in the care of older children.**

You can find more information on emergencies, warnings and preparedness actions here:

- [VicEmergency](#) app – that can be downloaded on your android and iOS mobile devices
- [VicEmergency](#) Hotline (1800 226 226)
- Website <https://emergency.vic.gov.au>
- Facebook (<https://www.facebook.com/vicemergency>)
- Twitter (<https://twitter.com/vicemergency>)
- ABC local radio, Sky News and other emergency broadcasters

Frequently Asked Questions

What is the department's policy?

The Department of Education annually assesses the fire risk of all schools and early childhood services with the support of the Commonwealth Scientific and Industrial Research Organisation (CSIRO). They are allocated a category of risk (categories 0 to 6). Schools and services that are Categories 0-3 are published on the [Bushfire At-Risk Register \(BARR\)](#). Schools at some risk of bushfire and grassfire are published on the [Category 4 List](#).

The department's [Bushfire and Grassfire Preparedness Policy](#) requires all schools and early childhood services on the BARR and the Category 4 List to close when a Catastrophic fire danger rating day is forecast in their fire weather district. All school bus routes which travel in or through a district with Catastrophic fire danger must also be cancelled.

The policy also requires that schools at the highest risk of bushfire (those in Categories 0, 1 and 2 of the Bushfire At-Risk Register) enact pre-emptive action plans based on the fire danger forecast for their Local Government Area (LGA).

Who issues fire danger forecasts?

The Bureau of Meteorology (BoM) provides public fire danger rating forecasts each day of the fire danger period using fire weather district areas. In Victoria, there are 9 fire weather districts, which are based on Local Government Area boundaries.

The department uses these forecasts when supporting schools to enact their pre-emptive bushfire actions plans.

FINANCIAL ASSISTANCE

INFORMATION FOR FAMILIES

Every Victorian child should have access to the world of learning opportunities that exist beyond the classroom. The Camps, Sports and Excursions Fund helps ensure that no student will miss out on the opportunity to join their classmates for important, educational and fun activities. It is part of making Victoria the Education State and the Government's commitment to breaking the link between a student's financial circumstances and their outcomes.

CAMPS, SPORTS and EXCURSIONS FUND (CSEF)

School camps provide children with inspiring experiences in the great outdoors. Excursions encourage a deeper understanding of how the world works while sports teach teamwork, discipline and leadership. All are a part of a healthy curriculum.

CSEF is provided by the Victorian Government to assist eligible families to cover the costs of school excursions, camps and sporting activities.

If you hold a valid means-tested concession card or support an out of home care student you may be eligible for CSEF. A special consideration category also exists for asylum seeker and refugee families. The allowance is paid directly to the school to use towards expenses relating to camps, excursions or sporting activities for the benefit of your child

The annual CSEF amount per student is \$400 for all school students.

HOW TO APPLY

New applicants should contact the school office to obtain a CSEF application form or download from the website below.

If you applied for CSEF at your child's school last year, you do not need to complete an application form this year unless there has been a change in your family circumstances.

You only need to complete an application form if any of the following changes have occurred:

- **new student enrolments:** your child has started or changed schools this year.
- **changed family circumstances:** such as a change of custody, change of name, concession card number, or new siblings commencing this year.

Check with the school office if you are unsure.

MORE INFORMATION

For more information about CSEF visit:

<https://www.vic.gov.au/camps-sports-and-excursions-fund>



Community



Heathcote Primary School
Respect ~ Learning ~ Teamwork ~ Responsibility

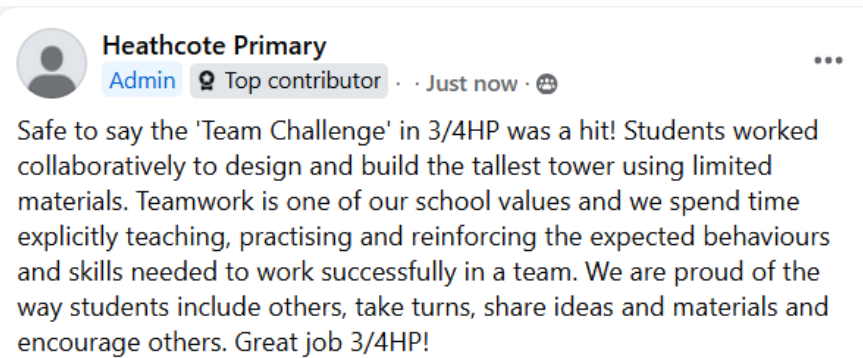


Heathcote Primary School

Private group · 120 members

Heathcote Primary School has a Private Group page on Facebook. If you would like to become a member of the group, search for Heathcote Primary School and request to join. Please answer the questions.

Each request is approved individually. For the safety of our students, there are three questions to ensure that only people directly connected to HPS become members. Requests are usually approved within 72 hours. However, if we are unsure of the connection to the school, there may be a delay whilst we do some research. We may also decline the original request and seek further information. Please don't be offended—our intention is to make sure we can identify each person is directly connected to the school.



Community Happenings



Heathcote Primary School
Respect - Learning - Teamwork - Responsibility

the **Mariah's**
Musicians

facebook.com/mariahsmusicians



MUSIC LESSONS AVAILABLE WITH MARIAH MCCARTHY

Guitar, piano, ukulele and voice lessons
Private & shared available

Enquire now -
mariahs mccarthy@gmail.com



Woolworths CRICKET BLAST

HEATHCOTE CRICKET CLUB

FUN IS IN FULL SWING!

Join Woolworths Cricket Blast
A safe way to have fun and stay active for kids of all abilities.

HEATHCOTE CRICKET CLUB BLAST SESSIONS
Session 1 - 9/11/2025 Session 2 - 16/9/2025
Session 3 - 23/11/2025 Session 4 - 30/11/2025
Session 5 - 7/12/2025 Session 6 - 8/2/2026
Session 7 - 15/2/2026 Session 8 15/2/2026

SIGN UP TODAY!

Play Cricket

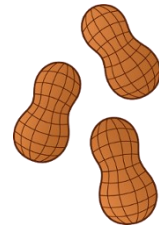
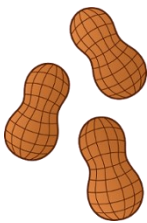
PROUDLY PRESENTED BY

School Bank Details

Account Name: Heathcote Primary School Official Account

BSB: 083 001

ACCOUNT: 71 938 5618



School and Department policies
are available on the
[school website.](#)

School Sports and Excursion Fund (CSEF)

If you hold a current Healthcare card or a Centrelink pensioner card you may be eligible to apply for CSEF. CSEF provides financial assistance for families to use for camps, excursions and school sports.

If you think you may be eligible, please contact the school office.



**Remember,
only WATER
in your**



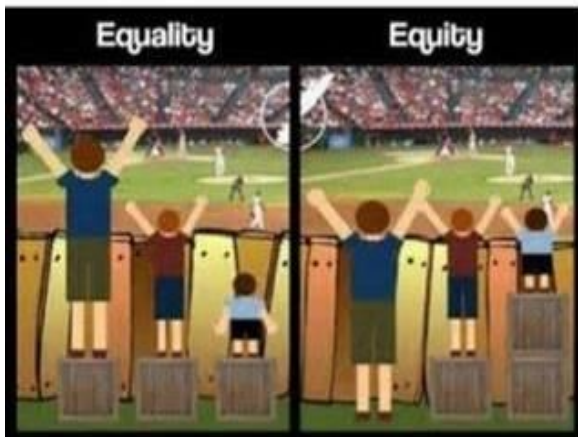
drink bottle at school.

SCHOLASTIC
Book Club LOOP
for Parents

LOOP is the Scholastic Book Club
Linked Online Ordering & Payment platform for parents.
To order and pay for Scholastic Book Club by credit card visit:
www.scholastic.com.au/LOOP

GET IT ON Google play

Download on the App Store



PROTECT

Everyone has the right to be safe and be protected from abuse. No one should behave in a way that makes you feel unsafe or afraid, including anyone in your family, anyone at school or anywhere else in the community. Tell a teacher or any adult at your school if you feel unsafe.



Please check your child's hair for any unwelcome visitors. If hair is shoulder length, please be sure to tie it up as a preventative strategy.



FOUR STEPS TO LICE-FREE LIFE:

1: INSPECT
If you suspect head lice, check.

2: TREAT
Use lice treatment product as directed.

3: REMOVE
 lice nits by combing the hair with the comb provided.

4: CLEAN
home and personal items.