



# Heathcote Primary School

## Newsletter

Telephone: (03) 5433 3090

[heathcote.ps@education.vic.gov.au](mailto:heathcote.ps@education.vic.gov.au)

Issue No. 3

13th February 2026

*At Heathcote PS we value... Respect Learning Teamwork Responsibility*

*We acknowledge that we are on the traditional lands of the Taungurung people and we pay our respects to their Elders, past, present and emerging.*

### What's Happening?

Week 4	Wednesday 18th February	Foundation Rest / Assessment Day (no Foundation students at school unless attending assessment)
	Wednesday 18th February	School Council meeting @ 5:30pm
Week 5	Wednesday 25th February	Foundation Rest / Assessment Day (no Foundation students at school unless attending assessment)
Week 7—9	11th March—23rd March	NAPLAN testing window (Grade 3 & 5 students)
Week 9	Wednesday 25th March	School Council meeting (includes AGM)
Week 10	Thursday 2nd April	End of Term 1 (early dismissal @ 2pm)

### Whole School Assembly

**Fridays, 9:05am—9:25am, astroturf area**

Please join us to celebrate achievements and milestones from the 'week that was'  
In the event of inclement weather, assembly will be online (meeting link will be sent)

### 2026 - What's Due?

OVERDUE

Updated medical plans and medications (eg. asthma, anaphylaxis, other)



Heathcote Primary School  
Respect ~ Learning ~ Teamwork ~ Responsibility

## VALUES AWARDS

### SWPBS FOCUS: We use manners and kind words

	Student	Reason
F	Austin	For consistently using kind words and manners in the classroom and for proudly demonstrating our school values in the school yard. Amazing work Austin!
1/2JS	Xavier D	Your kind words and actions help make our classroom a happy and safe place for everyone.
1/2M	Creed	For demonstrating our school values by regularly using kind words and manners. Great work Creed!
3/4HP	Yahya	For being very kind to your peers in the classroom and always using your manners. Keep being you!
3/4N	Amelia E	For consistently using kind words and manners! Fantastic work, Amelia!
5/6F	Kaylee	For using kind words and manners consistently and always being polite to those around her. Keep it up!
5/6MG	Angelo	For consistently using kind words and manners to help make the school a welcoming place for others. Well done, Angelo!

## KINDNESS AWARDS

**Students who consistently demonstrate acts of kindness, compassion and empathy towards others, promoting a positive and inclusive school environment.**

	Student	Reason
Junior Unit	Heidi	You are our Junior Unit Kindness Ambassador for consistently showing kindness to everyone, for always considering the feelings of others, and for being a wonderful friend and a great role model proudly representing HPS. Well done, Heidi!
Middle Unit	Charlotte D	For helping and supporting the people around her.
Senior Unit	Lewis	For consistently being considerate of other people's feelings and making sure they feel included.

**Congratulations to our award winners!**

*These awards were presented at assembly on Friday 13th February.*

## Principal's Report

Congratulations to our newly elected [Junior School Council](#) (JSC) representatives! Students presented a speech to their classmates who then voted on who they would like to be their class representatives. Throughout the year, JSC will work alongside Cett Sergi, Brenda King and Ash Johnson to lead initiatives across the school. I cannot wait to see what they achieve and look forward to supporting them to bring their ideas to life.



There was much excitement at break time when it was discovered there was extra pizza leftover from a [Kitchen](#) session looking for a good home. And, even more excitement when it was confirmed that ingredients picked earlier in the week from the [garden](#) were on the pizza!

As part of our literacy curriculum, students learn the craft of writing persuasive texts. At assembly on Friday, I shared a recent real life example of the importance of writing persuasively as part of a grant application we submitted in September 2025. In super exciting news, we can share that an [Active Schools grant](#) application was successful! As part of the application process, students were invited to complete a survey to identify an area of the yard that most needs a makeover. The most popular request was to resurface the basketball court. With the \$30 000 grant, we can now begin the process of granting this wish!

On the following pages there is information about [School Council](#). We have 12 school councillors (a combination of parent and community members along with school employees). Tenures are for two years (you can retire early if desired). We are calling for nominations—please see the timeline on page 5. Nomination forms are available from the office. Please note that the Department of Education has introduced a new expectation for school councillors—it is now a requirement that all school councillors have a Working With Children Check. Please consider joining School Council.

Carolyn

# Department of Education Fact Sheet: school council elections – information for parents/carers

## What is a school council and what does it do?

All government schools in Victoria have a school council. They are legally constituted bodies that are given powers to set the broad direction of a school, in accordance with Ministerial Order 1280 Constitution of Government School Councils, and the *Education and Training Reform Act 2006*. In doing this, a school council may directly influence the quality of education for students.

## Who is on the school council?

For most primary school councils, there are several possible categories of membership:

**A mandated elected parent member category** – members of this category generally comprise more than one third of the council's total membership. Department employees can be parent members at their child's school providing that they are not engaged in work at the school.

**A mandated elected school employee member category** – members of this category make up no more than one-third of membership. The principal of the school is automatically one of these members.

**An optional community member category** – members are co-opted by a decision of the council because of their special skills, interests or experience. Department employees are not eligible to be community members.

A small number of school councils have nominee members.

For all schools with a Year 7 and above cohort, there is an additional category of membership:

**A mandated elected student member category, two positions.**

Generally, the term of office for all members is two years. The term of office of half the members expires each year, creating vacancies for the annual school council elections.

## Why is parent membership so important?

Parents on school councils provide important viewpoints and have valuable skills and a range of experiences and knowledge that can help inform and shape the direction of the school.

Those parents who become active on a school council find their involvement satisfying and may also find that their children feel a greater sense of belonging.

## Do I need special experience to be on school council?

Each member brings their own valuable skills and knowledge to the role, however, in order to successfully perform their duties, councillors may need to gain some new skills and knowledge.

It is important to have an interest in your child's school and the desire to work in partnership with others to help shape the school's future.

## Code of conduct for school councillors

School councils in Victoria are public entities as defined by the *Public Administration Act 2004*.

School councillors must comply with the Code of Conduct for Directors of Victorian Public Entities issued by the Victorian Public Sector Commission. The Code of Conduct is based on the Victorian public sector values and requires councillors to:

**act with honesty and integrity** – be truthful, open and clear about their motives and declare any real, potential or perceived conflict of interest and duty

**act in good faith in the best interests of the school** – work cooperatively with other councillors and the school community, be reasonable, and make all decisions with the best interests of students foremost in their minds

## [Code of conduct for school councillors continued from previous page](#)

**act fairly and impartially** – consider all relevant facts of an issue before making a decision, seek to have a balanced view, never give special treatment to a person or group and never act from self-interest

**use information appropriately** – respect confidentiality and use information for the purpose for which it was made available

**exercise due care, diligence and skill** – accept responsibility for decisions and do what is best for the school

**use the position appropriately** – not use the position as a councillor to gain an advantage

**act in a financially responsible manner** – observe all the above principles when making financial decisions

**comply with relevant legislation and policies** – know what legislation and policies are relevant for which decisions and obey the law

**demonstrate leadership and stewardship** – set a good example, encourage a culture of accountability, manage risks effectively, exercise care and responsibility to keep the school strong and sustainable.

## [Indemnity for school council members](#)

School councillors are indemnified against any liability in respect of any loss or damage suffered by the council or any other person in respect of anything necessarily or reasonably done, or omitted to be done by the councillor in good faith in:

the exercise of a power or the performance of a function of a councillor, or

the reasonable belief that the act or omission was in the exercise of a power or the performance of a function of a council.

In other words, school councillors are not legally liable for any loss or damage suffered by council or others as a result of reasonable actions taken in good faith.

## [How can you become involved?](#)

By participating in, and voting in the school council elections, which are held in Term 1 each year. However, ballots are only held if more people nominate as candidates than there are positions vacant.

In view of this, you might consider:

standing for election as a member of the school council

encouraging another person to stand for election.

If you stand for election, you can arrange for someone to nominate you as a candidate or, you can nominate yourself in the parent member category. You can only be nominated by another member of the same category that you are eligible for (e.g. a member of the parent electorate may only nominate another parent of that electorate).

Event	Date
a) Notice of election and call for nominations	Monday 16 February 2026
b) Closing date for nominations	Monday 23 February 2026
c) Date by which the list of candidates will be posted	Wednesday 25 February 2026
d) Date by which ballot papers will be prepared and distributed	On or before Monday 2 March 2026
e) Close of ballot	Monday 9 March 2026
f) Vote count	Tuesday 10 March – Thursday 12 March 2026
g) Inform the school community of the outcomes of the election	Thursday 12 March 2026

# HAPPY BIRTHDAY

**Emma**

**Zane**

**Tayte**

**Amelia E**

**Audrey**



*Students have the option of wearing casual clothes to school on their birthday  
(or the closest school day to their birthday if their birthday falls on the weekend  
or in the school holidays)*



From September to April, everyone needs to wear a plain coloured, broadbrimmed hat when they are outside. This is part of our SunSmart policy. If you need a hat, the office has got you covered...literally! School hats can be purchased from the office for \$10.

## Office Hours

Monday to Friday

8:30am—4pm

Uniform orders can be placed at any time by completing an order form available from the office.

**Uniform orders will be available for collection on Tuesdays.**

# Cooking - Year 3/4



# Cooking - Year 5/6



# School Wide Positive Behaviour Support

Our expected behaviours matrix is displayed in all learning areas and the main office. Throughout the year, students will participate in sessions where they focus on each behaviour explicitly. Each week we have a whole school focus on one of the expected behaviours.



Next week we are focusing on:

We use equipment for its intended purpose



## HEATHCOTE PRIMARY SCHOOL RESPECT • LEARNING • TEAMWORK • RESPONSIBILITY

	LEARNING		
	ALWAYS	INSIDE	OUTSIDE
RESPECT	<ul style="list-style-type: none"> <li>We use an appropriate voice</li> <li>We use manners and kind words</li> <li>We follow instructions</li> <li>We keep our hands and feet to ourselves</li> </ul>	<ul style="list-style-type: none"> <li>We follow classroom expectations</li> <li>We walk</li> </ul>	<ul style="list-style-type: none"> <li>We leave nature in nature</li> <li>We share our spaces</li> </ul>
TEAMWORK	<ul style="list-style-type: none"> <li>We are inclusive</li> <li>We share</li> <li>We wait our turn</li> </ul>	<ul style="list-style-type: none"> <li>We pack up</li> </ul>	<ul style="list-style-type: none"> <li>We choose teams fairly</li> <li>We determine and play by the rules</li> </ul>
RESPONSIBILITY	<ul style="list-style-type: none"> <li>We use equipment for its intended purpose</li> <li>We arrive on time</li> <li>We look after school property</li> <li>We place rubbish in the correct bin</li> <li>We use our 'calm down' strategies</li> </ul>	<ul style="list-style-type: none"> <li>We use materials for their intended purpose</li> <li>We participate</li> </ul>	<ul style="list-style-type: none"> <li>We return our sports equipment</li> </ul>

# Daily Timetable



Heathcote Primary School  
Respect ~ Learning ~ Teamwork ~ Responsibility



# Daily Timetable

8:45am	<b>Classroom doors open</b> <i>Students take their bag inside and unpack for the day ahead. After doing so, students can go outside to play.</i>
8:57am	<b>Music begins followed by school bell</b> <i>Students make their way to their classroom via the toilets and drink tap (if needed)</i>
9am - 11am	<b>Learning time</b> <i>Includes a healthy snack of fruit or vegetables at approximately 10am and lunch eating time at 10:50am</i>
11am - 11:30am	<b>Break 1</b>
11:30am - 1:30pm	<b>Learning time</b> <i>Includes lunch / snack eating time at 1:20pm</i>
1:30pm - 2pm	<b>Break 2</b>
2pm - 3pm	<b>Learning time</b>
3pm	<b>Home time</b>

Students are encouraged to confirm after school pick up arrangements before starting their school day. For example, will they walk home? Meet a parent/carer in the yard/at the office? Meet a parent/carer at the car park? Will they catch the bus to after school care or catch it home?



Heathcote Primary School  
Respect ~ Learning ~ Teamwork ~ Responsibility

# Community Reminders

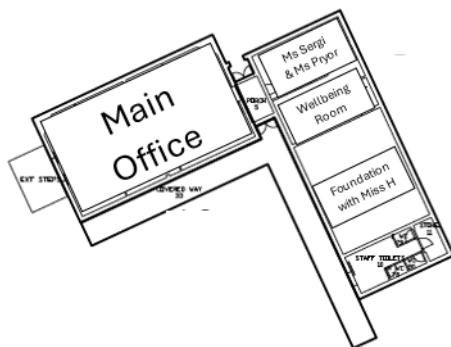


Heathcote Primary School  
Respect ~ Learning ~ Teamwork ~ Responsibility

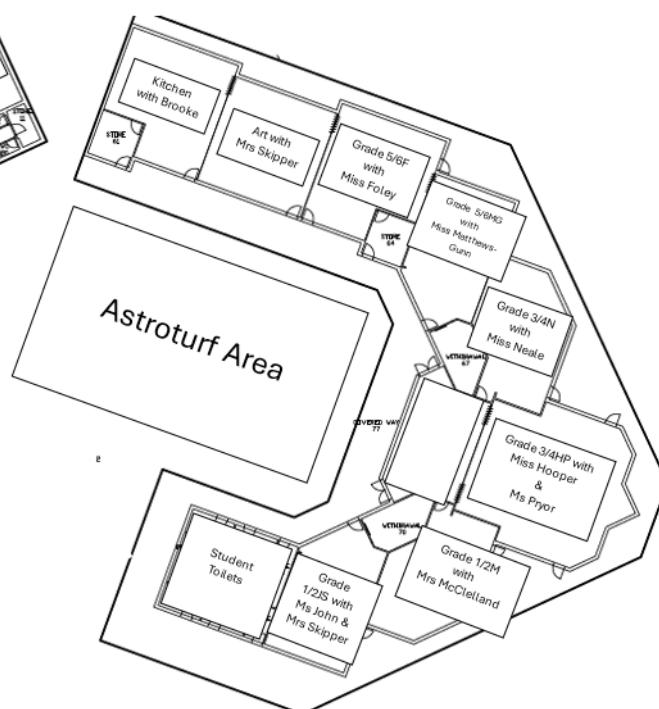
## What to pack in school bags?

- **Fruit and/or vegetable snacks.** Students have healthy snacks during class time to help maintain focus and concentration.
- **Lunch.** Students tend to eat their bigger meal at Break 1 to provide energy and brain power for the rest of the day's learning.
- **Snacks.** Students tend to eat their smaller snack/s at Break 2 to boost energy levels for the last part of the day.
- A **broad brimmed, plain hat.** Ideally, it will have the school logo on it but any plain (no patterns or logos) hat is still okay.
- A **drink bottle** filled with water (can be refilled at school)
- **Spare clothes** if you think your child might need them. Eg. Due to a toileting accident or from slipping over in a puddle (more applicable for winter time)

## Where is everyone in 2026?



Classroom Locations, 2026



# Community Reminders



Heathcote Primary School  
Respect ~ Learning ~ Teamwork ~ Responsibility

## Annual Privacy Reminder for our School Community

Our school collects and uses student and parent personal information for standard school functions or where permitted by law, as stated in the [Schools' privacy policy](#) and the [Schools' privacy collection notice](#).

Our [Photographing, Filming and Recording Students policy](#) describes how we collect and use photographs, video and recordings of students. The policy also explains when parent consent is required and how it can be provided and withdrawn.

We ask parents to also review the guidance we provide on how we use [[Microsoft 365/Google Workspace for Education](#)] safely at the school and what parents can do to further protect their child's information. If after reviewing the guidance, you have any questions or concerns regarding your child using [Microsoft 365/Google Workspace for Education], please contact the school.

For more information about privacy, refer to: [Schools' privacy policy: information for parents](#). This information is also available in eleven community languages:

- Amharic
- Arabic
- Chinese
- Dari
- Gujarati
- Mandarin
- Somali
- Sudanese
- Turkish
- Urdu
- Vietnamese



If you need help registering for ClassDojo, please contact your child's teacher.

## This week

 **78**

Messages sent to families

36 Last week

 **24**

Photos and videos shared

14 Last week



**Parents/Carers  
registered**

# Community Reminders



Heathcote Primary School  
Respect ~ Learning ~ Teamwork ~ Responsibility

## Classroom Satchels

Every classroom has a red satchel. These are used to transport notes to and from the office. For example, as part of a student's routine when they enter the classroom at the start of the day, they place any notes for the office into the bag. Class monitors take the satchel to the office and return at the end of the day to collect it. If the office has any notes that need to be sent home, the notes are in the satchel when it is picked up by the class monitors.



## Late Arrivals & Early Departures

If students arrive after 9am or need to leave before 3pm, they need to sign in or sign out at the office. This is done using the Compass portal. 5/6MG visited the office to practise the process.



## Mobile Phone Policy (student use)

Department policy requires that students who choose to bring mobile phones to school must have them switched off and securely stored during school hours, including break times.

All schools are required to have a local school policy on mobile phones that reflects this requirement and which provides details for the implementation of the policy at their school.

Our school's mobile phone policy (student use) is available on the school website [HERE](#).

In a nutshell, mobile phones are to be:

- switched off during school hours
- dropped off at the office for secure storage upon arrival. Eg. Not kept in school bags.
- collected at the end of the school day.



## Communication Channels

There are multiple ways information is shared. If you have any questions about accessing Compass or ClassDojo please speak to your child's classroom teacher.

1. Compass
2. Class Dojo—new in 2026!
3. Email
4. Newsletter
5. Website

**If you have a question about your child's learning or wellbeing, the first point of contact is their classroom teacher.**

# Community Reminders



Heathcote Primary School  
Respect ~ Learning ~ Teamwork ~ Responsibility

## Yard Supervision

The school yard is supervised from 8:45am until 9am. There is an announcement at 8:45am to signal classroom doors are open. Students are able to put their bags in their room, complete any before school routines and monitor jobs before heading back outside to play. The hospital end of the oval and playground are out of bounds before school.

After school, staff are on bus and crossing duty (which includes carpark duty in the main carpark). The main yard is not supervised. Any students who have not been collected by 3:15pm are taken to the office.

After school care is available through Trinity Academy. A bus from Heathcote PS drops after school care passengers at Trinity. For bookings, please contact Trinity Academy on [\(03\) 4411 6803](tel:0344116803)

## Main Car Park

The pick up/drop off zone is not a parking space. Please keep the engine running, drop off or collect your passenger/s and continue on your way so the traffic keeps flowing (and does not bank up onto the road).

When parking in the other section of the car park, please pull all the way into the car park spaces – as close as you safely can to the bollard marking the front of the car park.

Please travel slowly through the car park and check for students crossing between the sections/bays.



## Personal Accident & Property Insurance

The Department (which includes our school) does not have personal accident insurance for students.

If a student is injured at school or while participating in a school activity (including offsite) and requires medical treatment, parents/carers are responsible for all of their child's medical expenses. This includes transport costs such as ambulance costs (which may include an air ambulance if considered necessary)

The Department (which includes our school) does not have personal property insurance for staff and/or students.

Items of personal property that are lost, stolen or damaged at school or during school excursions are not the responsibility of Heathcote Primary School or the Department. Staff and students are reminded not to bring items of value to school or on school excursions.

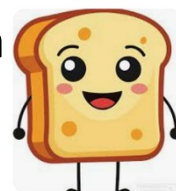
Heathcote Primary School encourages parents/carers to consider obtaining their own accident insurance for students and property of value that may be brought to school.

## Breakfast Club\*

Tuesday & Thursday

8:40am—8:55am

HPS Kitchen



Toast, cereal, milk, fruit available

*\*Starts in Week 2*

## Newsletter and website article: Schools in Category 3 on the Bushfire At-Risk Register and the Category 4 List

*This article has been developed by the Department of Education for schools to publish in their newsletter and school website.*

*This information has been developed to answer frequently asked questions regarding the Bushfire At-Risk Register (BARR) and Category 4 list and our school's closure on a Catastrophic fire danger day in your fire weather district.*

### School preparations for the bushfire season

Each year, we undertake a range of activities to ensure the safety of our school and to prepare for bushfires and grassfires.

An important part of this process is communicating to parents what will happen when certain fire danger ratings are issued to help ensure the safety of students and staff.

**Our school has been identified as being at risk of bushfire or grassfire and is a **Category 3** school.**



Our school will **close** on a day forecasted as **Catastrophic fire danger rating** in **Northern Country fire district**.

Closure of the school due to a Catastrophic fire danger rating will be enacted when the Bureau of Meteorology forecast and related public safety messaging are confirmed. Due to uncertainties in the forecast, the timing of this confirmation may vary. Information regarding potential or confirmed Catastrophic fire danger days will be communicated to you by **Compass and post on the school's private Facebook group**.

It is also important to be aware that:

- No one will be on site on days where the school is closed due to a forecast Catastrophic day.
- All bus routes that travel through the Catastrophic area will be cancelled.
- School camps will be cancelled if a Catastrophic fire danger rating day is forecast for fire weather district in which the camp is located, or if the travel involves passing through areas that have Catastrophic fire danger.

As part of preparing our school for the fire season, we have updated and completed our Emergency Management Plan which includes an identified 'Shelter in Place' location if needed. We have also continued to maintain the school grounds to reduce the fuel load.

### ***What can families and the school community do to help us prepare?***

- Ensure we have your current contact details, including your mobile phone numbers.

- Keep in touch with us by reading our newsletters, checking our [website](#), by talking to your child's teacher or any other member of the teaching staff about our emergency management plan.
- Make sure your family's bushfire survival plan is up-to-date and includes alternative care arrangements if our school is closed due to Catastrophic fire danger. Further information can be found on the [CFA's website](#).
- Action your family's bushfire survival plan if your own triggers are met. Our school community may be spread out across many areas and some families may be at higher risk than others. Your family's safety is critical, so please let us know if you are actioning your bushfire survival plan and if your children will be absent on these days.
- If your child is old enough, talk to [them about bushfires](#) and your family's bushfire survival plan.

Families are encouraged to action their [Bushfire Survival Plan](#) on Catastrophic fire danger rating days in their district. The safest option is to leave the night before or early on the morning of the Catastrophic day. **On such days, children should never be left at home alone or in the care of older children.**

You can find more information on emergencies, warnings and preparedness actions here:

- [VicEmergency](#) app – that can be downloaded on your android and iOS mobile devices
- [VicEmergency](#) Hotline (1800 226 226)
- Website <https://emergency.vic.gov.au>
- Facebook (<https://www.facebook.com/vicemergency>)
- Twitter (<https://twitter.com/vicemergency>)
- ABC local radio, Sky News and other emergency broadcasters

## **Frequently Asked Questions**

### ***What is the department's policy?***

The Department of Education annually assesses the fire risk of all schools and early childhood services with the support of the Commonwealth Scientific and Industrial Research Organisation (CSIRO). They are allocated a category of risk (categories 0 to 6). Schools and services that are Categories 0-3 are published on the [Bushfire At-Risk Register \(BARR\)](#). Schools at some risk of bushfire and grassfire are published on the [Category 4 List](#).

The department's [Bushfire and Grassfire Preparedness Policy](#) requires all schools and early childhood services on the BARR and the Category 4 List to close when a Catastrophic fire danger rating day is forecast in their fire weather district. All school bus routes which travel in or through a district with Catastrophic fire danger must also be cancelled.

The policy also requires that schools at the highest risk of bushfire (those in Categories 0, 1 and 2 of the Bushfire At-Risk Register) enact pre-emptive action plans based on the fire danger forecast for their Local Government Area (LGA).

### ***Who issues fire danger forecasts?***

The Bureau of Meteorology (BoM) provides public fire danger rating forecasts each day of the fire danger period using fire weather district areas. In Victoria, there are 9 fire weather districts, which are based on Local Government Area boundaries.

The department uses these forecasts when supporting schools to enact their pre-emptive bushfire actions plans.

## FINANCIAL ASSISTANCE

### INFORMATION FOR FAMILIES

Every Victorian child should have access to the world of learning opportunities that exist beyond the classroom. The Camps, Sports and Excursions Fund helps ensure that no student will miss out on the opportunity to join their classmates for important, educational and fun activities. It is part of making Victoria the Education State and the Government's commitment to breaking the link between a student's financial circumstances and their outcomes.

### CAMPS, SPORTS and EXCURSIONS FUND (CSEF)

School camps provide children with inspiring experiences in the great outdoors. Excursions encourage a deeper understanding of how the world works while sports teach teamwork, discipline and leadership. All are a part of a healthy curriculum.

CSEF is provided by the Victorian Government to assist eligible families to cover the costs of school excursions, camps and sporting activities.

If you hold a valid means-tested concession card or support an out of home care student you may be eligible for CSEF. A special consideration category also exists for asylum seeker and refugee families. The allowance is paid directly to the school to use towards expenses relating to camps, excursions or sporting activities for the benefit of your child

The annual CSEF amount per student is \$400 for all school students.

#### HOW TO APPLY

New applicants should contact the school office to obtain a CSEF application form or download from the website below.

If you applied for CSEF at your child's school last year, you do not need to complete an application form this year unless there has been a change in your family circumstances.

You only need to complete an application form if any of the following changes have occurred:

- **new student enrolments:** your child has started or changed schools this year.
- **changed family circumstances:** such as a change of custody, change of name, concession card number, or new siblings commencing this year.

Check with the school office if you are unsure.

#### MORE INFORMATION

For more information about CSEF visit:

<https://www.vic.gov.au/camps-sports-and-excursions-fund>



# Community



Heathcote Primary School  
Respect ~ Learning ~ Teamwork ~ Responsibility



## Heathcote Primary School

Private group · 120 members

Heathcote Primary School has a Private Group page on Facebook. If you would like to become a member of the group, search for Heathcote Primary School and request to join. Please answer the questions.

Each request is approved individually. For the safety of our students, there are three questions to ensure that only people directly connected to HPS become members. Requests are usually approved within 72 hours. However, if we are unsure of the connection to the school, there may be a delay whilst we do some research. We may also decline the original request and seek further information. Please don't be offended—our intention is to make sure we can identify each person is directly connected to the school.



### Heathcote Primary

Admin · Top contributor · Yesterday at 13:35 · 🌐

You never know what a day will bring. And, today it brought a turtle! A member of the public called the office asking if we could help rescue a turtle near school and operation 'Reptile Rescue' was born...

From Grade 3 students: Today we were called to rescue a turtle. We took a tub to collect him and carried him to safety. He was VERY stinky! We measured the turtle carefully and he was 25cm long (or approximately 2 toothbrushes). He had thick algae on the shell. We think he might have come on an adventure from the creek. We are going to let it go in the creek after school.



# Community Happenings



Heathcote Primary School  
Respect - Learning - Teamwork - Responsibility

*the* **Mariah's**  
Musicians

facebook.com/mariahsmusicians



## MUSIC LESSONS AVAILABLE WITH MARIAH MCCARTHY

Guitar, piano, ukulele and voice lessons  
Private & shared available

Enquire now -  
mariahsmccarthy@gmail.com



**FUN  
IS IN FULL  
SWING!**

Join Woolworths Cricket Blast  
A safe way to have fun and stay active for kids of all abilities.

**HEATHCOTE CRICKET CLUB BLAST SESSIONS**  
Session 1 - 9/11/2025 Session 2 - 16/9/2025  
Session 3 - 23/11/2025 Session 4 - 30/11/2025  
Session 5 - 7/12/2025 Session 6 - 8/2/2026  
Session 7 - 15/2/2026 Session 8 15/2/2026

**SIGN UP TODAY!**

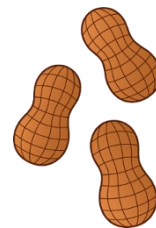
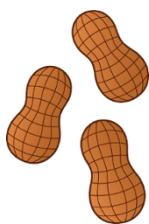
PROUDLY  
PRESENTED BY

## School Bank Details

Account Name: Heathcote Primary School Official Account

BSB: 083 001

ACCOUNT: 71 938 5618



School and Department policies  
are available on the  
[school website.](#)

## School Sports and Excursion Fund (CSEF)

If you hold a current Healthcare card or a Centrelink pensioner card you may be eligible to apply for CSEF. CSEF provides financial assistance for families to use for camps, excursions and school sports.

If you think you may be eligible, please contact the school office.



**Remember,  
only WATER  
in your**



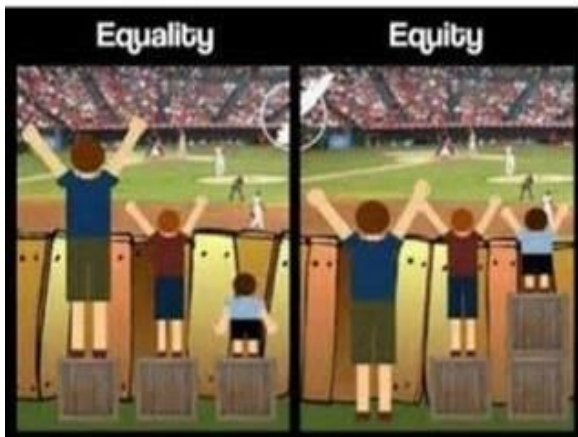
**drink bottle at school.**

**SCHOLASTIC**  
**Book Club LOOP**  
for Parents

LOOP is the Scholastic Book Club  
Linked Online Ordering & Payment platform for parents.  
To order and pay for Scholastic Book Club by credit card visit:  
[www.scholastic.com.au/LOOP](http://www.scholastic.com.au/LOOP)

GET IT ON Google play

Download on the App Store



## PROTECT

Everyone has the right to be safe and be protected from abuse.

No one should behave in a way that makes you feel unsafe or afraid, including anyone in your family, anyone at school or anywhere else in the community.

Tell a teacher or any adult at your school if you feel unsafe.



Please check your child's hair for any unwelcome visitors. If hair is shoulder length, please be sure to tie it up as a preventative strategy.

### FOUR STEPS TO LICE-FREE LIFE:

